

ST. AUGUSTINE, FLORIDA

AL-692 (FAA)

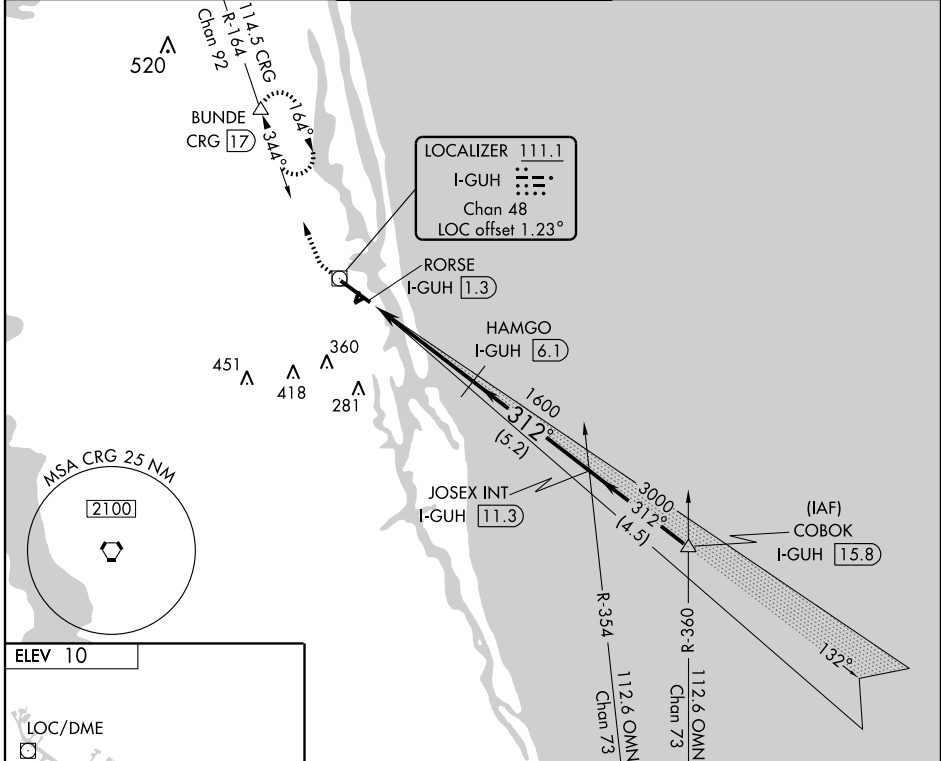
ILS RWY 31

ST. AUGUSTINE (SGJ)

LOC/DME I-GUH 111.1 Chan 48	APP CRS 312°	Rwy Idg 7196 TDZE 8 Apt Elev 10
---	------------------------	--

<p>▽ NA</p> <p>▲ DME REQUIRED.</p>	MISSED APPROACH: Climb to 3000 via heading 312° and CRG R-164 to BUNDE/CRG 17 DME and hold.
------------------------------------	---

ATIS 119.625	JACKSONVILLE APP CON 120.75 308.4	ST AUGUSTINE TOWER ★ 127.625 (CTAF) 269.475	GND CON 121.175 251.125	UNICOM 122.95
------------------------	---	---	-----------------------------------	-------------------------



SE-3, 22 OCT 2009 to 19 NOV 2009

SE-3, 22 OCT 2009 to 19 NOV 2009

ELEV 10

LOC/DME

Profile view showing the vertical path from 13 DME to 312° heading, with a 4.8 NM distance from FAF. Key altitudes include 7926 X 150, 7196 X 150, 2701 X 60, and 1806 X 60. TDZE is 8.

MIRL Rwy 2-20 and 6-24
HIRL Rwy 13-31

Knots	60	90	120	150	180
Min:Sec					

	BUNDE △	JOSEX INT I-GUH 11.3	COBOK I-GUH 15.8	Procedure Turn NA
	RORSE I-GUH 1.3	HAMGO I-GUH 6.1		
				GS 3.00° TCH 56
	4.8 NM	5.2 NM	4.5 NM	
CATEGORY	A	B	C	D
S-ILS 31	258-3/4 250 (300-3/4)			
S-LOC 31	380-1 372 (400-1)			380-1/4 372 (400-1/4)
CIRCLING	460-1 450 (500-1)		460-1/2 560-2 450 (500-1/2) 550 (600-2)	

ST. AUGUSTINE, FLORIDA
Orig 09015

29° 58'N - 81° 20'W

ST. AUGUSTINE (SGJ)
ILS RWY 31