

RIVERTON, WYOMING

AL-691 (FAA)

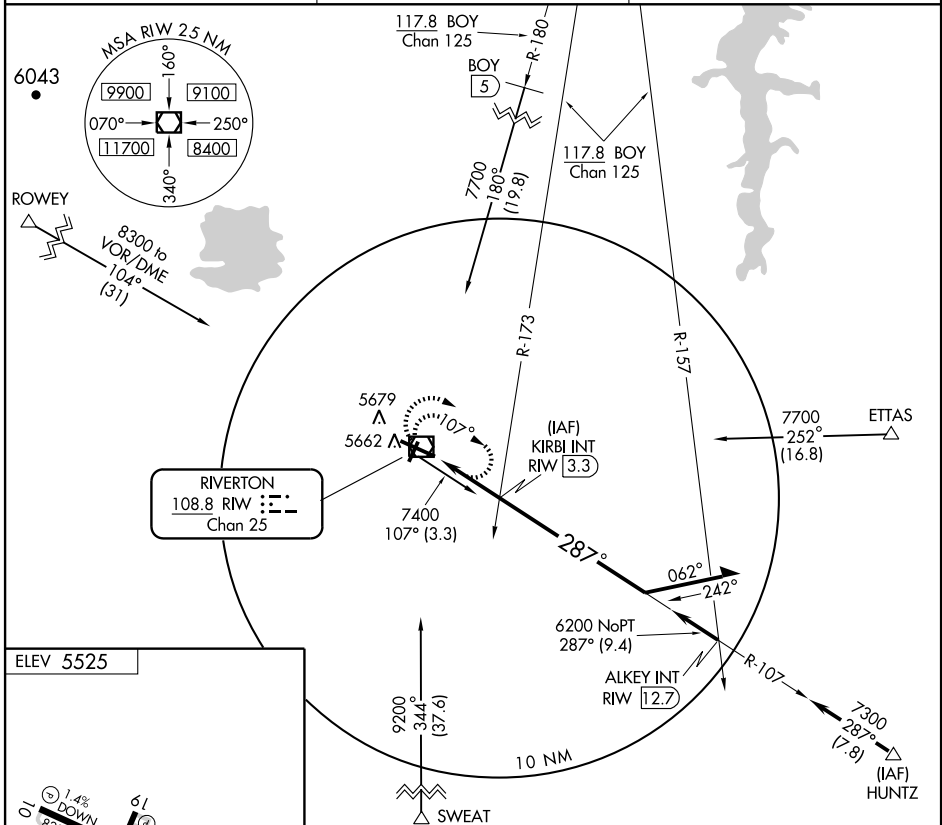
VOR/DME RIW 108.8 Chan 25	APP CRS 287°	Rwy Idg TDZE Apt Elev	8203 5456 5525
--	------------------------	-----------------------------	---

VOR RWY 28

RIVERTON RGNL (RIW)

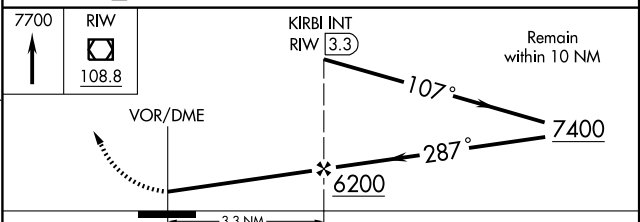
▼ Inoperative table does not apply to Cat. D. **MA**LSR MISSED APPROACH: Climb to 7700 in RIW VOR/DME holding pattern.

ASOS 121.425	CASPER RADIO 122.2	UNICOM 122.8 (CTAF) ①
------------------------	------------------------------	--



ELEV 5525

REIL Rws 1, 10 and 19 **①**
MIRL Rwy 1-19 **①**
HIRL Rwy 10-28 **①**



CATEGORY	A	B	C	D
S-28	5780-1/2 324 (300-1/2)			5780-1 324 (300-1)
CIRCLING	5980-1 455 (500-1)		5980-1 1/2 455 (500-1 1/2)	6080-2 555 (600-2)

RIVERTON, WYOMING
Amdt 8B 09183

43°04'N - 108°28'W

RIVERTON RGNL (RIW) VOR RWY 28

NW-1, 22 OCT 2009 to 19 NOV 2009

NW-1, 22 OCT 2009 to 19 NOV 2009