

RIVERTON, WYOMING

AL-691 (FAA)

RNAV (GPS) RWY 10

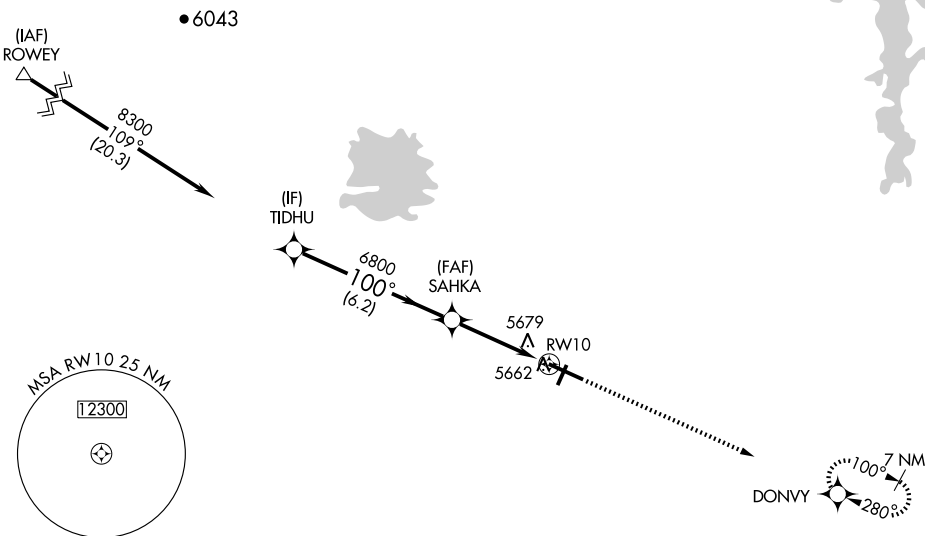
RIVERTON RGNL (RIW)

WAAS CH 42899 W10A	APP CRS 100°	Rwy Idg TDZE Apt Elev	8203 5525 5525
--	------------------------	-----------------------------	---

<p>Baro-VNAV NA below -26°C (-14°F). DME/DME RNP-0.3 NA.</p>	<p>MISSED APPROACH: Climb to 9000 direct DONVY and hold, continue climb-in-hold to 9000.</p>
--	--

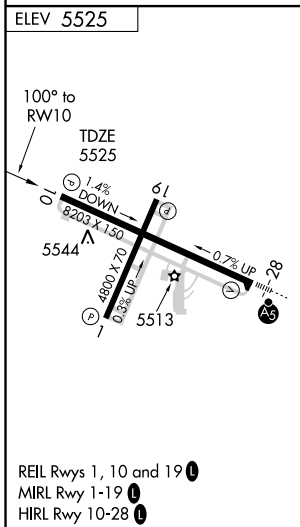
<p>ASOS 121.425</p>	<p>CASPER RADIO 122.2</p>	<p>UNICOM 122.8 (CTAF) ①</p>
--------------------------------	--------------------------------------	--

Procedure NA for arrival at ROWEY via V330 westbound.



NW-1, 22 OCT 2009 to 19 NOV 2009

NW-1, 22 OCT 2009 to 19 NOV 2009



Procedure Turn NA	TIDHU	VGS1 and RNAV glidepath not coincident.		9000	DONVY
	8300	SAHKA			
		6800			
				*1.2 NM to RWY 10	*LNAV only
GS 3.00° TCH 50					
CATEGORY	A	B	C	D	
LPV DA		5882-1¼	357 (400-1¼)		
LNAV/VNAV DA		5974-1½	449 (500-1½)		
LNAV MDA	5940-1	415 (500-1)	5940-1¼	415 (500-1¼)	
CIRCLING		5980-1½	455 (500-1½)		6080-2 555 (600-2)

RIVERTON, WYOMING
Orig 09183

43°04'N - 108°28'W

RNAV (GPS) RWY 10

RIVERTON RGNL (RIW)