

RIVERTON, WYOMING

AL-691 (FAA)

ILS or LOC RWY 28

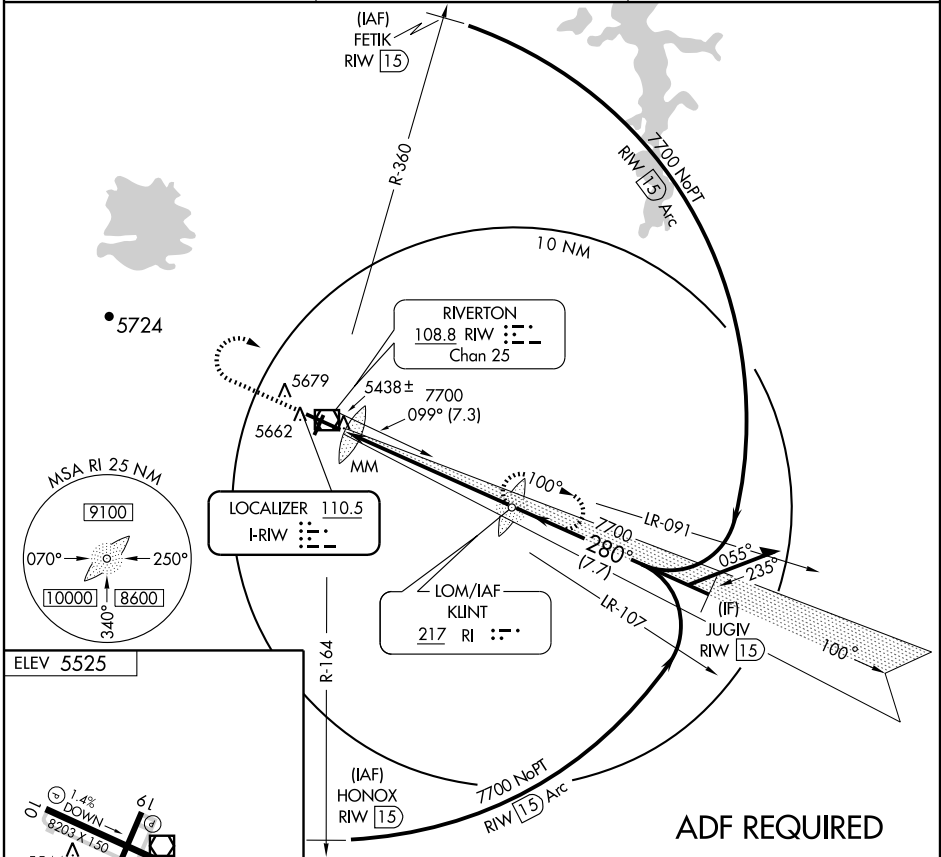
RIVERTON RGNL (RIW)

LOC I-RW 110.5	APP CRS 280°	Rwy Idg 8203
		TDZE 5456
		Apt Elev 5525

NA For inoperative MALSR, increase Cat D S-LOC visibility to 1 mile.
When local altimeter setting not received, use Lander altimeter setting and increase all DAs/MDAs 80 feet. When using Lander altimeter setting, for inoperative MALSR, increase S-ILS 28 all Cat visibility to 1 mile.

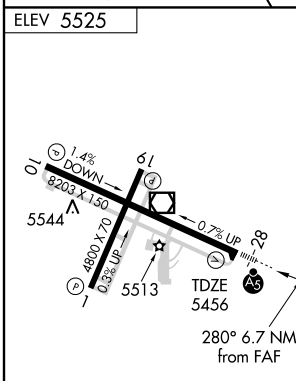
MALSR
AS
MISSED APPROACH: Climb to 5920 then climbing right turn to 7700 direct RI LOM and hold.

ASOS 121.425	CASPER RADIO 122.2	UNICOM 122.8 (CTAF)
------------------------	------------------------------	-------------------------------



NW-1, 22 OCT 2009 to 19 NOV 2009

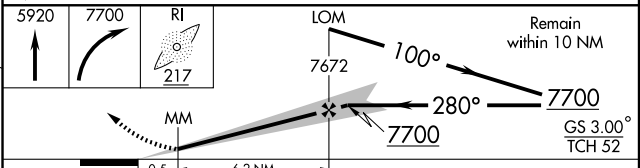
NW-1, 22 OCT 2009 to 19 NOV 2009



REIL Rws 1, 10 and 19
 MIRL Rwy 1-19
 HIRL Rwy 10-28

FAF to MAP 6.7 NM

Knots	60	90	120	150	180
Min:Sec	6:42	4:28	3:21	2:41	2:14



CATEGORY	A	B	C	D
S-ILS 28		5656-1/2	200 (200-1/2)	
S-LOC 28		5760-1/2	304 (300-1/2)	5760-3/4 304 (300-3/4)
CIRCLING	5980-1	455 (500-1)	5980-1 1/2 455 (500-1 1/2)	6080-2 555 (600-2)

RIVERTON, WYOMING
Amdt 1C 09183

43°04'N - 108°28'W

RIVERTON RGNL (RIW)

ILS or LOC RWY 28