

# VOR RWY 4

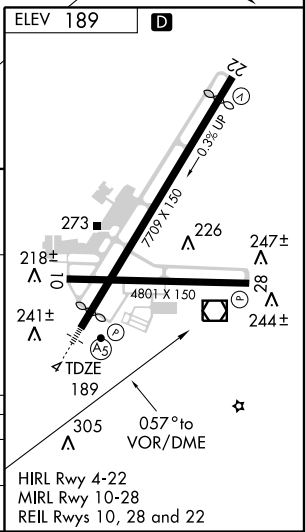
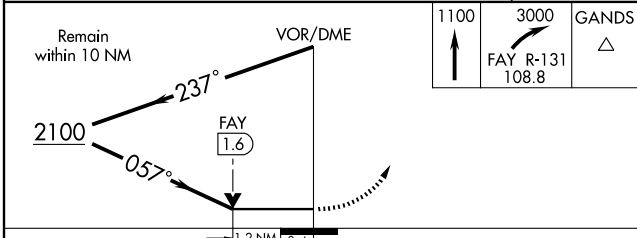
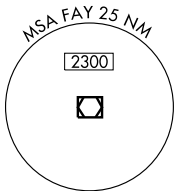
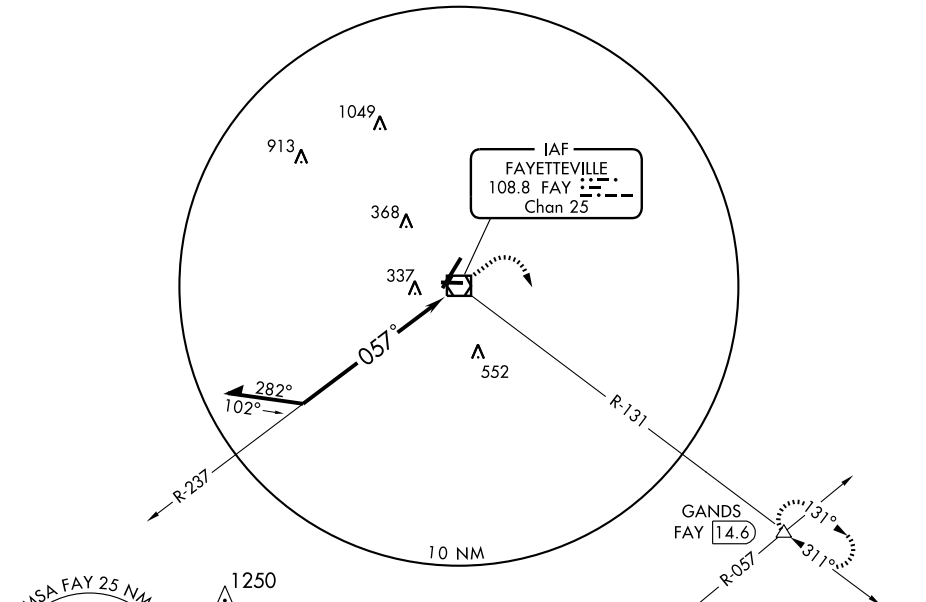
FAYETTEVILLE RGNL/GRANNIS FIELD (FAY)

VOR/DME FAY <b>108.8</b> Chan 25	APP CRS <b>057°</b>	Rwy Idg TDZE Apt Elev	<b>6507</b> <b>189</b> <b>189</b>
--	------------------------	-----------------------------	---

	MISSED APPROACH: Climb to 1100 then climbing right turn to 3000 via FAY R-131 to GANDS Int/FAY 14.6 DME and hold.		
	ATIS <b>121.25</b>	FAYETTEVILLE APP CON <b>133.0 295.0</b>	FAYETTEVILLE TOWER <b>118.3 269.2</b>

SE-2, 22 OCT 2009 to 19 NOV 2009

SE-2, 22 OCT 2009 to 19 NOV 2009



CATEGORY	A	B	C	D
S-4	640/24 451 (500-½)		640/40 451 (500-¾)	640/50 451 (500-1)
CIRCLING	640-1 451 (500-1)		640-1½ 451 (500-1½)	740-2 551 (600-2)

# VOR RWY 4