
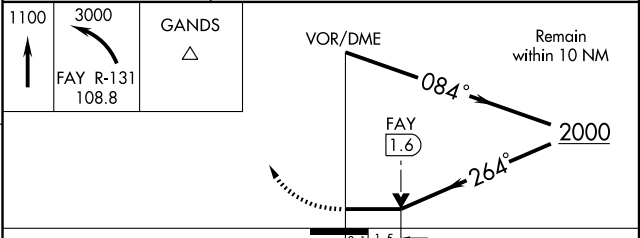
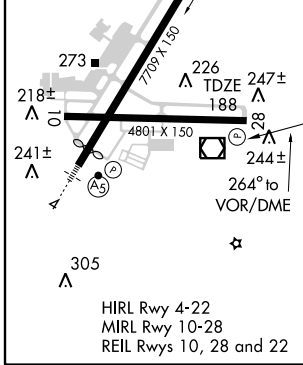
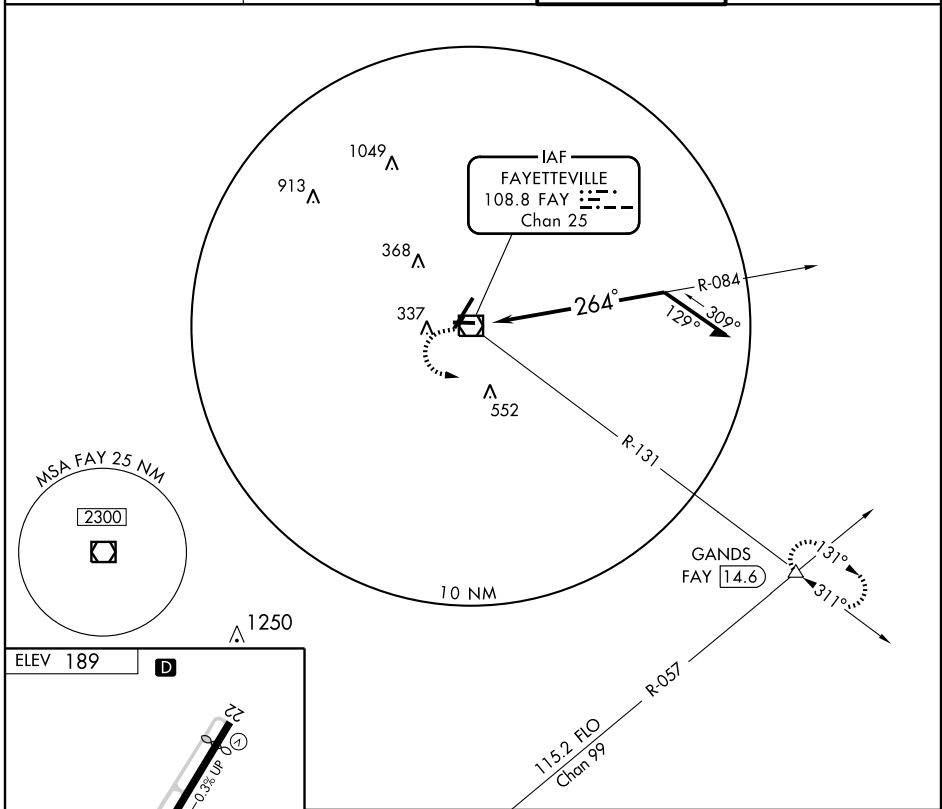


VOR/DME FAY 108.8 Chan 25	APP CRS 264°	Rwy Idg TDZE Apt Elev	4801 188 189
--	------------------------	-----------------------------	---

VOR RWY 28

FAYETTEVILLE RGNL/GRANNIS FIELD (FAY)

		MISSED APPROACH: Climb to 1100 then climbing left turn to 3000 via FAY R-131 to GANDS Int/FAY 14.6 DME and hold.	
ATIS 121.25	FAYETTEVILLE APP CON 133.0 295.0	FAYETTEVILLE TOWER 118.3 269.2	GND CON 121.7 348.6



CATEGORY	A	B	C	D
S-28	680-1	492 (500-1)	680-1¼ 492 (500-1½)	680-1½ 492 (500-1½)
CIRCLING	680-1	491 (500-1)	680-1½ 491 (500-1½)	740-2 551 (600-2)

SE-2, 22 OCT 2009 to 19 NOV 2009

SE-2, 22 OCT 2009 to 19 NOV 2009