

RNAV (GPS) RWY 22

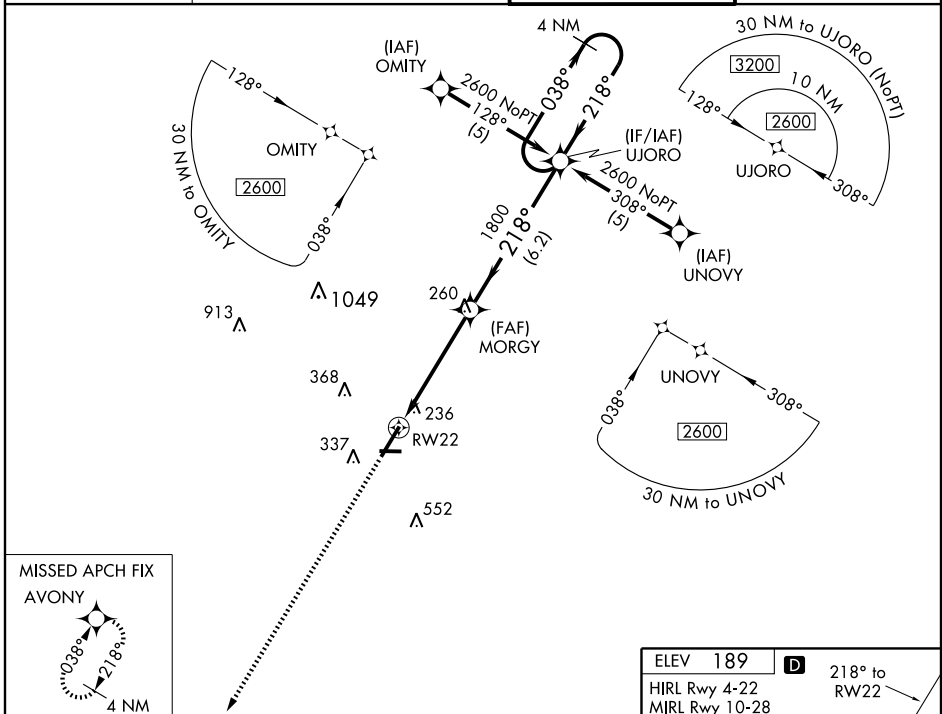
FAYETTEVILLE RGNL/GRANNIS FIELD (FAY)

WAAS CH 45511 W22A	APP CRS 218°	Rwy Idg TDZE Apt Elev	6507 182 189
--	------------------------	-----------------------------	---

▼ For uncompensated Baro-VNAV systems, LNAV/VNAV NA below -15°C (5°F) or above 48°C (118°F).
▲ DME/DME RNP-0.3 NA. When local altimeter setting not received, use Clinton altimeter setting and increase all DA 65 feet and all MDA 80 feet and LPV all Cats, LNAV/VNAV all Cats, and LNAV Cats C/D visibilities ¼ mile. Baro-VNAV and VDP NA when using Clinton altimeter setting.

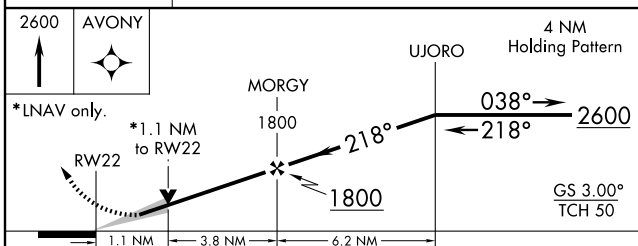
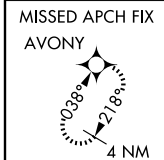
MISSED APPROACH:
Climb to 2600 direct AVONY and hold.

ATIS 121.25	FAYETTEVILLE APP CON 133.0 295.0	FAYETTEVILLE TOWER 118.3 269.2	GND CON 121.7 348.6
-----------------------	--	--	-------------------------------



SE-2, 22 OCT 2009 to 19 NOV 2009

SE-2, 22 OCT 2009 to 19 NOV 2009



CATEGORY	A	B	C	D
LPV DA		432-1	250 (300-1)	
LNAV/VNAV DA		504-1¼	322 (400-1¼)	
LNAV MDA		560-1	378 (400-1)	560-1¼ 378 (400-1¼)
CIRCLING	640-1	451 (500-1)	640-1½ 451 (500-1½)	740-2 551 (600-2)

