

MOUNTY TWO DEPARTURE

ATIS 121.25
GND CON
121.7 348.6
FAYETTEVILLE TOWER
118.3 269.2
FAYETTEVILLE DEP CON
133.0 295.0

RALEIGH-DURHAM
117.2 RDU
Chan 119
N35°52.35'-W78°47.00'
L-36, H-9-12

FRANKLIN
110.6 FKN
Chan 43
N36°42.85'-W77°00.74'
L-35-36, H-10-12

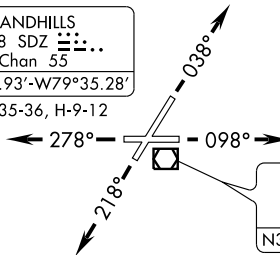
GREENSBORO
116.2 GSO
Chan 109
N36°02.74'-W79°58.58'
L-25-36, H-9-12

LIBERTY
113.0 LIB
Chan 77
N35°48.70'-W79°36.76'
L-25-36, H-9-12

TAR RIVER
117.8 TYI
Chan 125
N35°58.61'-W77°42.23'
L-35-36, H-9-12

SANDHILLS
111.8 SDZ
Chan 55
N35°12.93'-W79°35.28'
L-25-35-36, H-9-12

CHARLOTTE
115.0 CLT
Chan 97
N35°11.42'-W80°57.11'
L-25-36, H-9-12



FAYETTEVILLE
108.8 FAY
Chan 25
N34°59.13'-W78°52.50'
L-35-36

CHESTERFIELD
108.2 CTF
Chan 19
N34°39.03'-W80°16.50'
L-24-25-36

WILMINGTON
117.0 ILM
Chan 117
N34°21.10'-W77°52.46'
L-23-35, H-9-12

FLORENCE
115.2 FLO
Chan 99
N34°13.98'-W79°39.43'
L-24-35-36, H-9-12

GRAND STRAND
117.6 CRE
Chan 123
N33°48.83'-W78°43.47'
L-35

NOTE: RADAR Required.

TAKEOFF MINIMUMS:

RWY 4, 22, 10, 28 Standard

TAKEOFF OBSTACLE NOTES:

NOTE: RWY 4, Trees beginning 154 feet from DER, 117 feet right of centerline, up to 79 feet AGL/189 feet MSL.
Trees beginning 344 feet from DER, 240 feet left of centerline, up to 63 feet AGL/173 feet MSL.

NOTE: RWY 10, Trees beginning 182 feet from DER, 295 feet right of centerline, up to 43 feet AGL/223 feet MSL.
Trees beginning 451 feet from DER, 383 feet left of centerline, up to 62 feet AGL/242 feet MSL.

NOTE: RWY 22, Vehicle on road 98 feet from DER, left and right of centerline, up to 15 feet AGL/186 feet MSL.
Trees beginning 1059 feet from DER, 551 feet right of centerline, up to 94 feet AGL/ 264 feet MSL.

NOTE: RWY 28, Pole and trees beginning 199 feet from DER, 307 feet left of centerline, up to 34 feet AGL/204 feet MSL.
Trees beginning 593 feet from DER, 96 feet right of centerline, up to 79 feet AGL/239 feet MSL.

NOTE: Chart not to scale.

DEPARTURE ROUTE DESCRIPTION

RWY 4: Climb heading 038° or as assigned. Thence. . .

RWY 10: Climb heading 098° or as assigned. Thence. . .

RWY 22: Climb heading 218° or as assigned. Thence. . .

RWY 28: Climb heading 278° or as assigned. Thence. . .

. . . Maintain 2000 feet or assigned altitude. Expect vectors to join filed route.
Expect further clearance to filed altitude 10 minutes after departure.

MOUNTY TWO DEPARTURE

SE-2, 22 OCT 2009 to 19 NOV 2009

SE-2, 22 OCT 2009 to 19 NOV 2009