

# LOC BC RWY 22

FAYETTEVILLE RGNL/GRANNIS FIELD (FAY)

LOC I-GRA <b>110.5</b>	APP CRS <b>218°</b>	Rwy Idg TDZE Apt Elev	<b>6507</b> <b>182</b> <b>189</b>
---------------------------	------------------------	-----------------------------	---

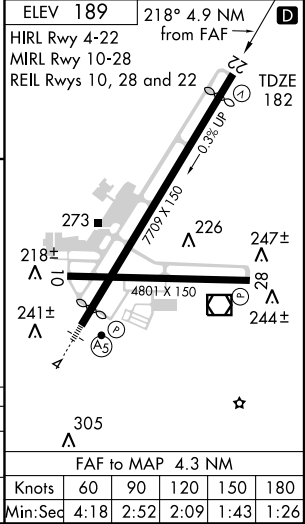
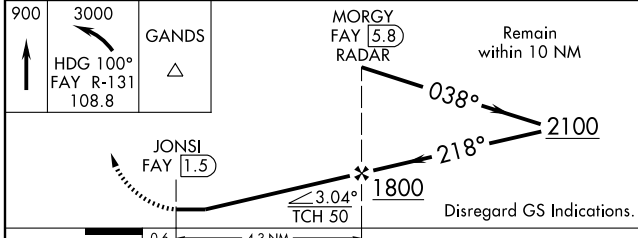
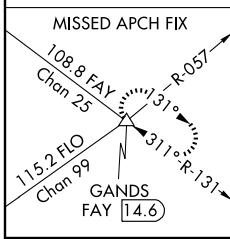
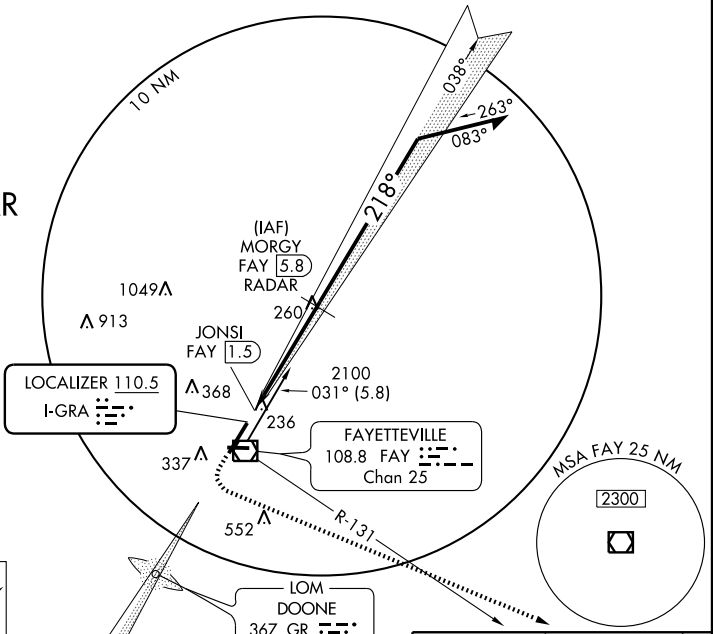
**▼** DME or RADAR REQUIRED. When local altimeter setting not received, use Clinton altimeter setting and increase all MDA 80 feet and S-22 Cat D visibility ¼ mile.

**▲** MISSED APPROACH: Climb to 900 then climbing left turn to 3000 via heading 100° and FAY VOR/DME R-131 to GANDS INT/FAY 14.6 DME and hold.

ATIS <b>121.25</b>	FAYETTEVILLE APP CON <b>133.0 295.0</b>	FAYETTEVILLE TOWER <b>118.3 269.2</b>	GND CON <b>121.7 348.6</b>
-----------------------	--	--	-------------------------------

ALTERNATE MISSED APCH FIX  
DOONE  
367 GR

**DME or RADAR REQUIRED**



CATEGORY	A	B	C	D
S-22	500-1 318 (400-1)			
CIRCLING	640-1 451 (500-1)	640-1½ 451 (500-1½)	740-2 551 (600-2)	

# LOC BC RWY 22

SE-2, 22 OCT 2009 to 19 NOV 2009

SE-2, 22 OCT 2009 to 19 NOV 2009