

RNAV (GPS) RWY 34

REDDING MUNI (RDD)

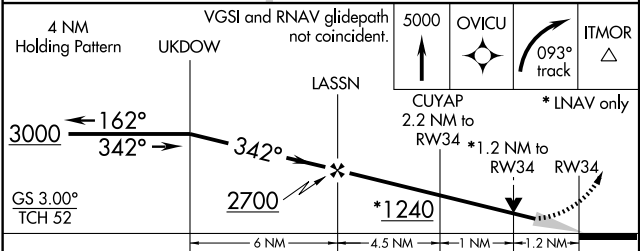
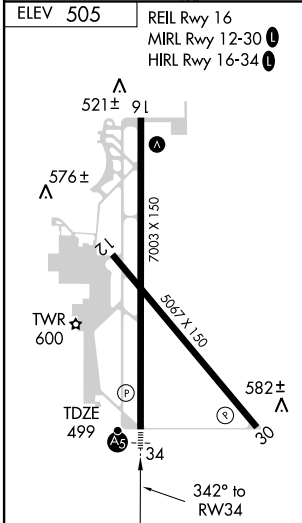
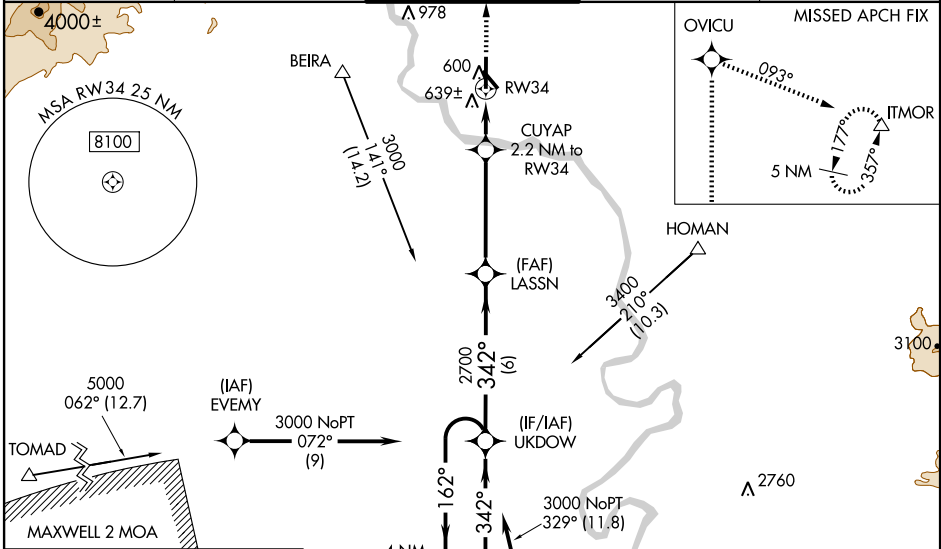
WAAS CH 56402 W34A	APP CRS 342°	Rwy Idg 7003 TDZE 499 Apt Elev 505
--	------------------------	---

⚠ DME/DME RNP-0.3 NA. Circling to Rwy 12 NA at night. For inoperative MALSR, increase LPV all Cats. visibility to 1 1/4 mile. When using Red Bluff altimeter setting increase LPV all Cats. visibility to 1 1/4 mile. For uncompensated Baro-VNAV systems, LNAV/VNAV NA below -16°C(4°F) or above 48°C(118°F). VDP and Baro-VNAV NA when using Red Bluff altimeter setting. When local altimeter setting not received, use Red Bluff altimeter setting and increase all DAs/MDAs 80 feet, and increase LPV visibility 1/4 mile all Cats., LNAV/VNAV visibility 1/2 mile all Cats., and LNAV visibility Cat. C/D 1/4 mile.

MALSR

MISSED APPROACH:
Climb to 5000 direct OVICU and right turn via 093° track to ITMOR and hold, continue climb-in-hold to 5000.

ATIS 124.1	OAKLAND CENTER 132.2 350.3	REDDING TOWER * 119.8(CTAF) 0 269.25	GND CON 121.7	UNICOM 122.95
----------------------	--------------------------------------	---	-------------------------	-------------------------



CATEGORY	A	B	C	D
LPV DA		790-1/2	291 (300-1/2)	
LNAV/VNAV DA		944-1	445 (500-1)	
LNAV MDA	940-1/2	441 (500-1/2)	940-3/4 441 (500-3/4)	940-1 441 (500-1)
CIRCLING	1000-1	495 (500-1)	1000-1 1/2 495 (500-1 1/2)	1060-2 555 (600-2)

SW-2, 22 OCT 2009 to 19 NOV 2009

SW-2, 22 OCT 2009 to 19 NOV 2009