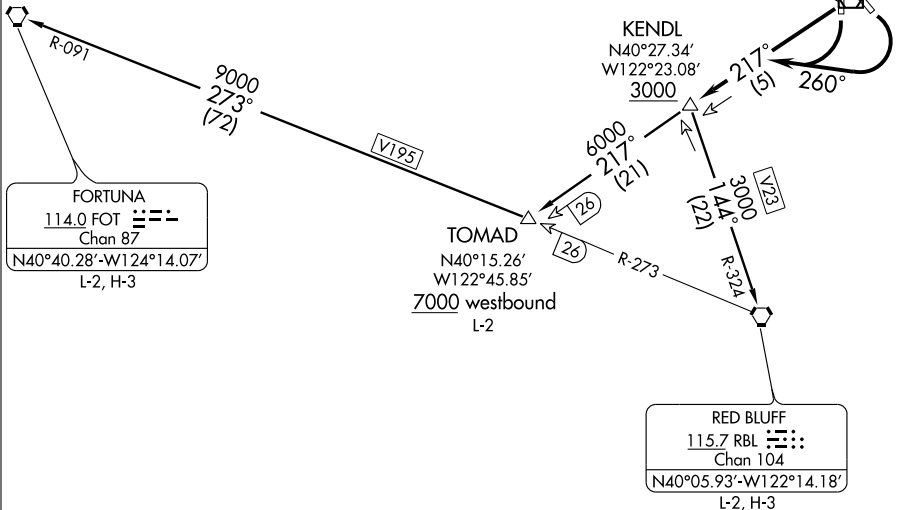


ATIS 124.1
GND CON
121.7
REDDING TOWER*
119.8 269.25
OAKLAND CENTER
132.2 350.3

REDDING
108.4 RDD
Chan 21
N40°30.27'
W122°17.50'



NOTE: Chart not to scale.

DEPARTURE ROUTE DESCRIPTION

TAKE-OFF RUNWAYS 12 and 16: Cats. A and B: turn right heading 260° to intercept and proceed via the RDD R-217 to KENDL INT. Cross KENDL INT at or above 3000, thence via (transition) or (assigned route). Cats. C and D: not authorized.

TAKE-OFF RUNWAYS 30 and 34: Turn right to cross RDD VOR/DME and proceed via the RDD R-217 to KENDL INT. Cross KENDL INT at or above 3000 thence via (transition) or (assigned route).

FORTUNA TRANSITION (KENDL1.FOT): From over KENDL INT via RDD R-217 to TOMAD INT, thence via RBL R-273 and FOT R-091 to FOT VORTAC.

RED BLUFF TRANSITION (KENDL1.RBL): From over KENDL INT via RBL R-324 to RBL VORTAC.

TOMAD TRANSITION (KENDL1.TOMAD): From over KENDL INT via RDD R-217 to TOMAD INT.

SW-2, 22 OCT 2009 to 19 NOV 2009

SW-2, 22 OCT 2009 to 19 NOV 2009