

# ILS or LOC/DME RWY 34

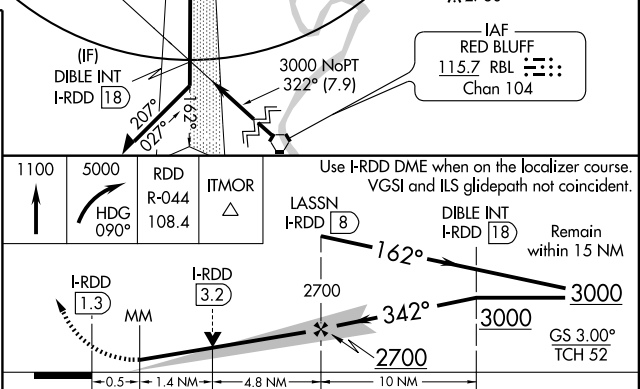
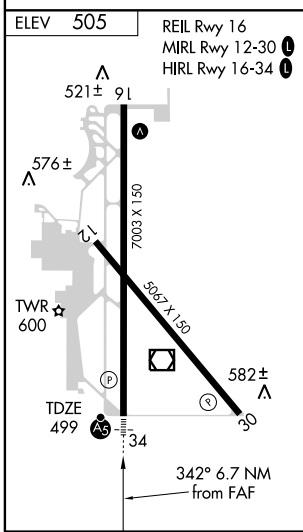
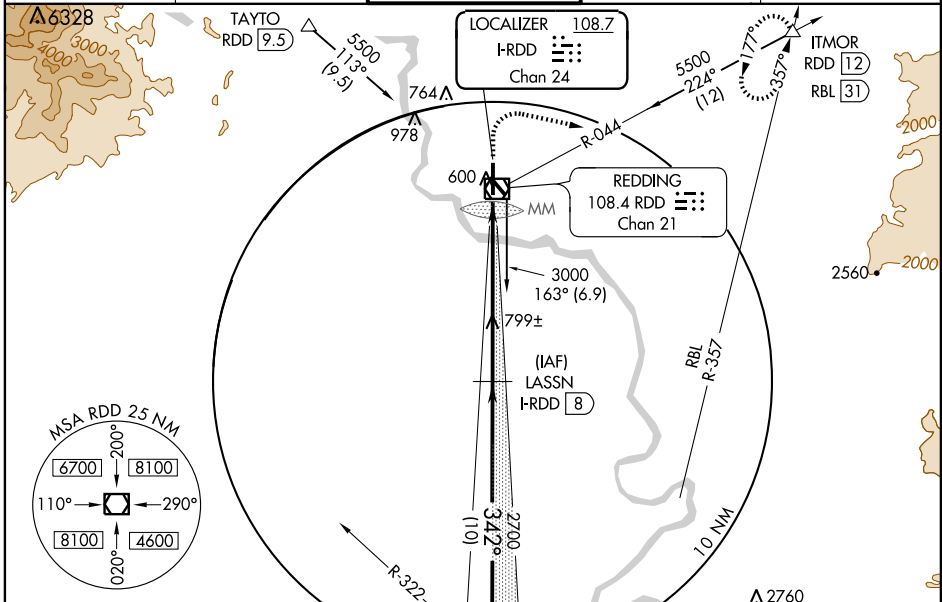
REDDING MUNI (RDD)

LOC/DME I-RDD <b>108.7</b> Chan 24	APP CRS <b>342°</b>	Rwy Idg TDZE Apt Elev	<b>7003</b> <b>499</b> <b>505</b>
--	------------------------	-----------------------------	---

**⚠** When local altimeter setting not received, use Red Bluff altimeter setting and increase all DAs/MDAs 80 feet, S-LOC 34 Cats. C, D, and E visibility ¼ mile, and Circling Cat. C and D visibility ¼ mile. VDP NA when using Red Bluff altimeter setting. For inoperative MALSRR, increase S-ILS 34 Cat. E visibility to ¾ mile, S-LOC 34 Cat. E visibility to 2¼ mile. When using Red Bluff altimeter setting increase S-ILS 34 all Cats. visibility to 1 mile, and S-LOC 34 Cat. E visibility to 2½ mile.

**MALSRR**  
⚠  
MISSED APPROACH: Climb to 1100 then climbing right turn to 5000 via heading 090° and RDD R-044 to ITMOR INT/RDD 12 DME and hold, continue climb-in-hold to 5000.

ATIS <b>124.1</b>	OAKLAND CENTER <b>132.2 350.3</b>	REDDING TOWER * <b>119.8(CTAF) 0 269.25</b>	GND CON <b>121.7</b>	UNICOM <b>122.95</b>
----------------------	--------------------------------------	--	-------------------------	-------------------------



CATEGORY	A	B	C	D	E
S-ILS 34	699-½ 200 (200-½)				
S-LOC 34	1140-½ 641 (700-½)	1140-1¼ 641 (700-1½)	1140-1½ 641 (700-1¾)	1140-1¾ 641 (700-1¾)	1140-1¾ 641 (700-1¾)
CIRCLING	1140-1 635 (700-1)	1140-1¾ 635 (700-1¾)	1140-2 635 (700-2)	1340-3 835 (900-3)	

SW-2, 22 OCT 2009 to 19 NOV 2009

SW-2, 22 OCT 2009 to 19 NOV 2009