

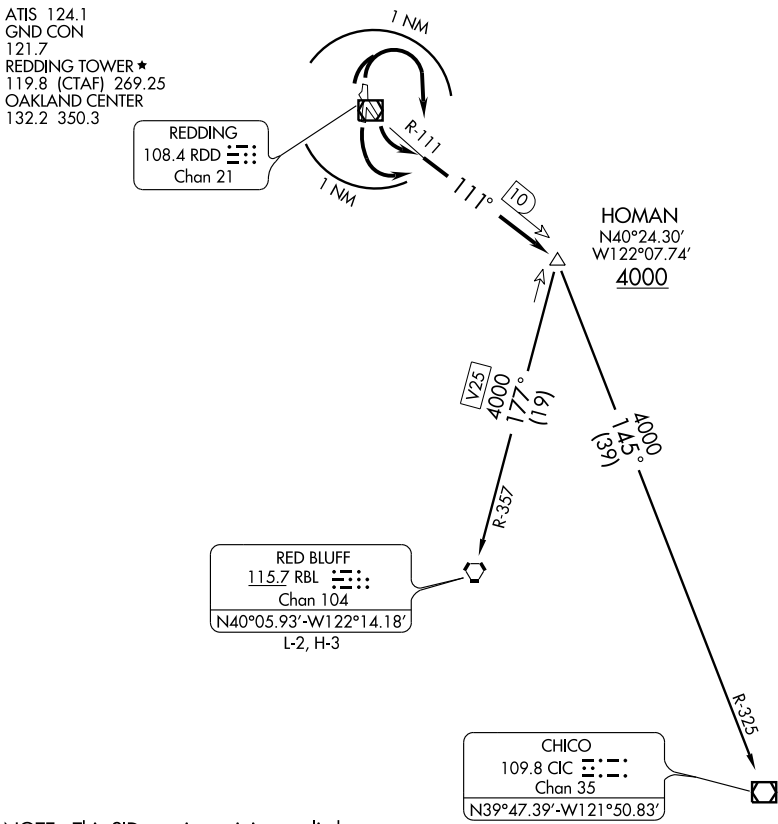
ATIS 124.1
GND CON
121.7
REDDING TOWER ★
119.8 (CTAF) 269.25
OAKLAND CENTER
132.2 350.3

REDDING
108.4 RDD
Chan 21

RED BLUFF
115.7 RBL
Chan 104
N40°05.93'-W122°14.18'
L-2, H-3

CHICO
109.8 CIC
Chan 35
N39°47.39'-W121°50.83'
L-2

HOMAN
N40°24.30'
W122°07.74'
4000



NOTE: This SID requires minimum climb of 350' per NM to 4000'.

NOTE: Chart not to scale.

DEPARTURE ROUTE DESCRIPTION

TAKE-OFF RUNWAYS 12, 16: Turn left within 1 NM, thence....

TAKE-OFF RUNWAYS 30,34: Turn right within 1 NM, thence....

....Intercept the RDD R-111, direct HOMAN INT, cross HOMAN INT at or above 4000'; then via (transition) or (assigned route). Expect clearance to filed altitude 10 minutes after departure.

CHICO TRANSITION (HOMAN2.CIC): From over HOMAN INT via CIC R-325 to CIC VOR/DME.

RED BLUFF TRANSITION (HOMAN2.RBL): From over HOMAN INT via RBL R-357 to RBL VORTAC.