

VOR/DME RWL <b>109.4</b> Chan 31	APP CRS <b>224°</b>	Rwy Idg TDZE Apt Elev	<b>7008</b> <b>6813</b> <b>6813</b>
--	------------------------	-----------------------------	---

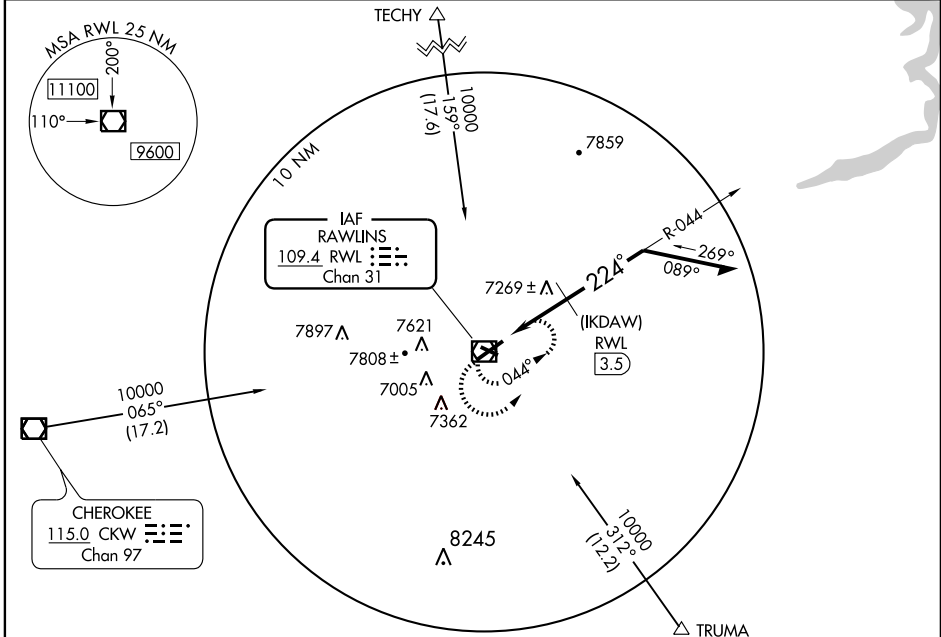
# VOR or GPS RWY 22

RAWLINS MUNI/HARVEY FIELD (RWL)

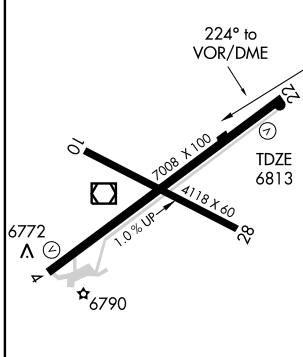
**⚠** Circling not authorized northwest of Runway 4-22.

**⚠** MISSED APPROACH: Climbing left turn to 9300 via RWL R-044 within 10 NM, then direct RWL VOR/DME and hold.

ASOS <b>118.525</b>	DENVER CENTER <b>132.1 254.35</b>	UNICOM <b>123.0 (CTAF)</b>
------------------------	--------------------------------------	-------------------------------



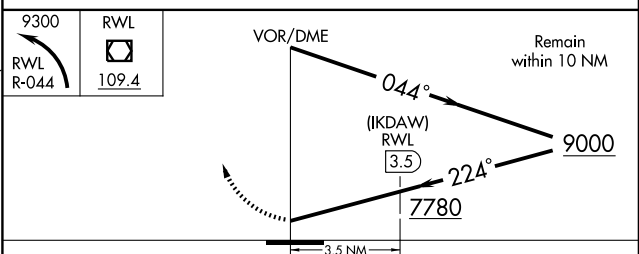
ELEV 6813



REIL Rwy 22 and 28

MIRL Rwy 4-22 and 10-28

Knots	60	90	120	150	180
Min:Sec					



CATEGORY	A	B	C	D
S-22	7780-1¼ 967 (1000-1¼)	7780-1½ 967 (1000-1½)	7780-3	967 (1000-3)
CIRCLING	7780-1¼ 967 (1000-1¼)	7780-1½ 967 (1000-1½)	7780-3	967 (1000-3)
DME MINIMA				
S-22	7520-1	707 (800-1)	7520-2 707 (800-2)	7720-3 907 (1000-3)
CIRCLING	7520-1	707 (800-1)	7520-2 707 (800-2)	7720-3 907 (1000-3)

NW-1, 22 OCT 2009 to 19 NOV 2009

NW-1, 22 OCT 2009 to 19 NOV 2009