

NDB or GPS RWY 31

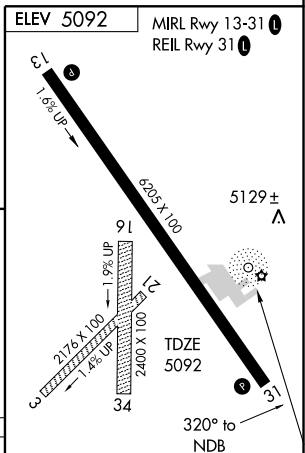
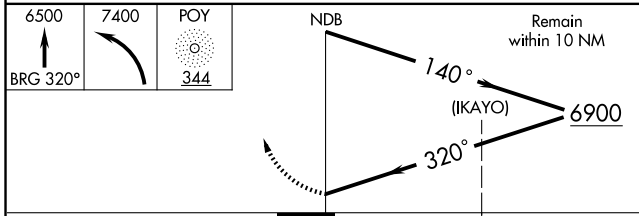
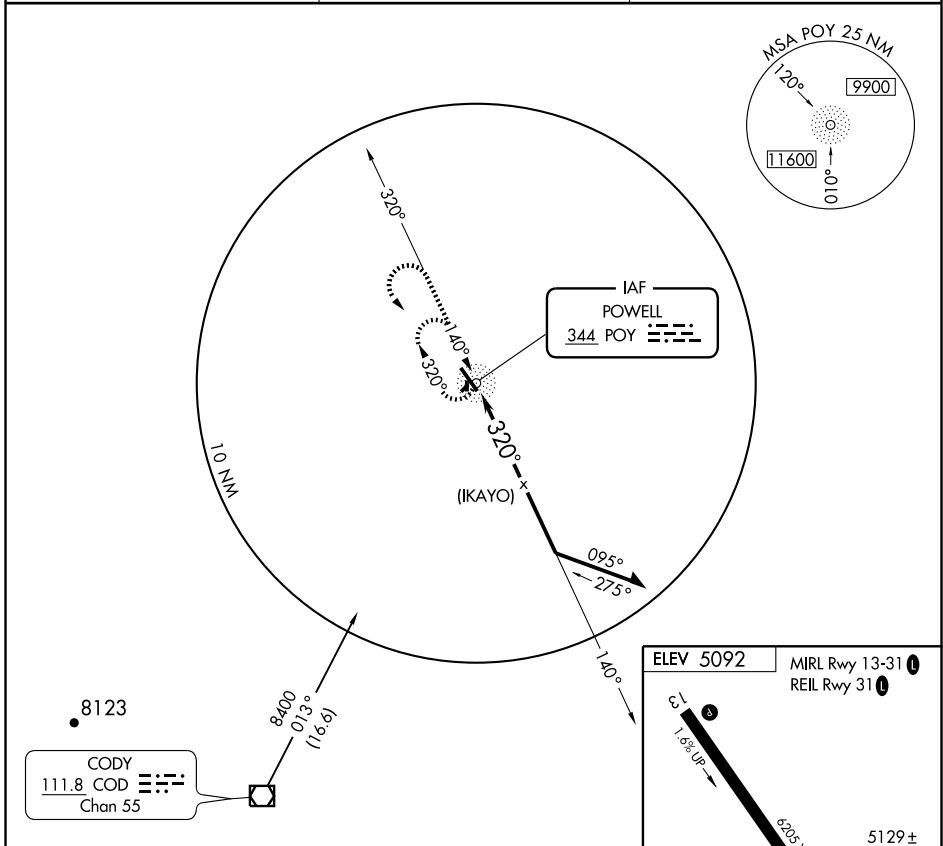
POWELL MUNI (POY)

NDB POY 344	APP CRS 320°	Rwy Idg 6205
		TDZE 5092
		Apt Elev 5092

▽ Obtain local altimeter setting on CTAF; when not received, procedure not authorized.

▲ NA MISSED APPROACH: Climb to 6500 via 320° bearing from POY NDB then climbing left turn to 7400 direct POY NDB and hold.

AWOS-3 119.275	CASPER RADIO 122.3	UNICOM 122.7 (CTAF) ①
--------------------------	------------------------------	--



CATEGORY	A	B	C	D
S-31	5500-1	408 (500-1)	5500-1¼	408 (500-1¼)
CIRCLING	5500-1 408 (500-1)	5560-1 468 (500-1)	5560-1½ 468 (500-1½)	5660-2 568 (600-2)

Knots	60	90	120	150	180
Min:Sec					

NW-1, 22 OCT 2009 to 19 NOV 2009

NW-1, 22 OCT 2009 to 19 NOV 2009