

VOR RWY 31

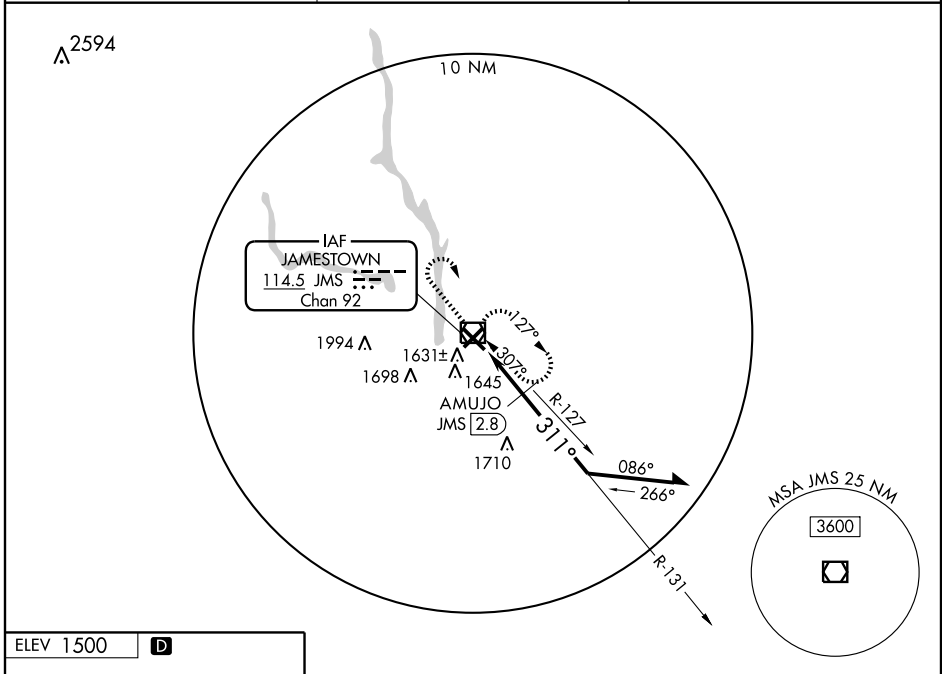
JAMESTOWN RGNL (JMS)

VOR/DME JMS 114.5 Chan 92	APP CRS 311°	Rwy Idg TDZE Apt Elev	6502 1498 1500
---	------------------------	-----------------------------	---

▼ For inoperative MALS, increase AMUJO FIX minimums S-31 Cat D visibility to 1¼ mile. VDP NA with Devils Lake altimeter setting. When local altimeter setting not received, use Devils Lake altimeter setting and increase all MDA 180 feet, increase S-31 Cats C and D visibility ¼ mile, Circling Cats C and D visibility ½ mile, increase AMUJO FIX minimums S-31 Cat C and Circling Cats C and D visibility ¼ mile.

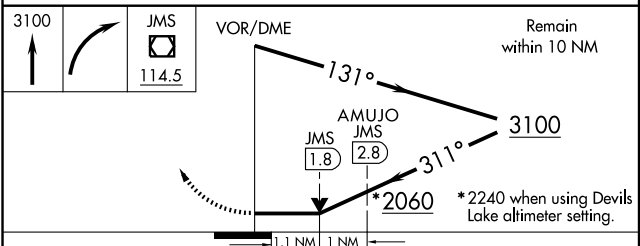
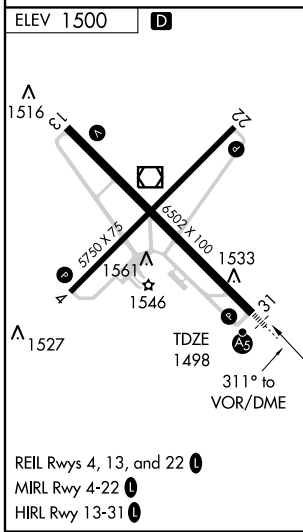
MALS
AS
MISSED APPROACH:
Climb to 3100 then
right turn direct JMS
VOR/DME and hold.

ASOS 118.425	MINNEAPOLIS CENTER 124.2 270.3	UNICOM 123.0 (CTAF) 0
------------------------	--	---------------------------------



NC-1, 22 OCT 2009 to 19 NOV 2009

NC-1, 22 OCT 2009 to 19 NOV 2009



CATEGORY	A	B	C	D
S-31	2060-½	562 (600-½)	2060-1 562 (600-1)	2060-1¼ 562 (600-1¼)
CIRCLING	2060-1	560 (600-1)	2060-1½ 560 (600-½)	2060-2 560 (600-2)
AMUJO FIX MINIMUMS				
S-31	1900-½	402 (400-½)	1900-¾ 402 (400-¾)	1900-1 402 (400-1)
CIRCLING	1960-1	460 (500-1)	1960-1½ 460 (500-1½)	2060-2 560 (600-2)