

RNAV (GPS) RWY 4

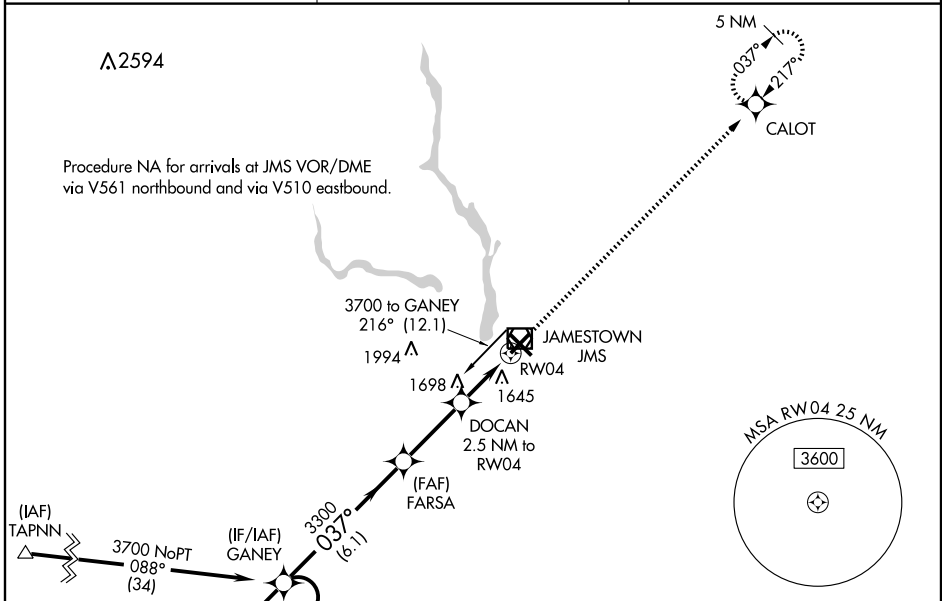
JAMESTOWN RGNL (JMS)

WAAS CH 97505 W04A	APP CRS 037°	Rwy Idg TDZE 1496 Apt Elev 1500
---------------------------------	------------------------	---

⚠ Baro-VNAV NA when using Devils Lake altimeter setting.
⚠ For uncompensated Baro-VNAV systems, LNAV/VNAV NA below -18°C (0°F) or above 46°C (114°F).
W DME/DME RNP-0.3 NA. VDP NA when using Devils Lake altimeter setting. If local altimeter setting not received, use Devils Lake altimeter setting and increase all DAs 172 feet and all MDAs 180 feet.

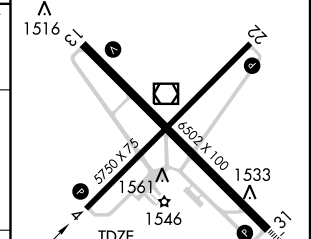
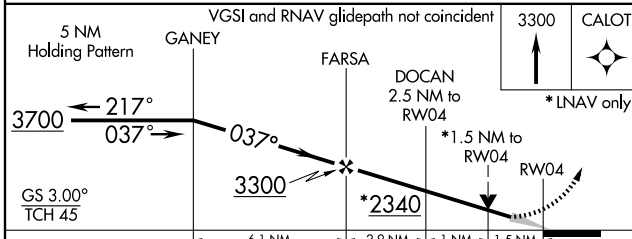
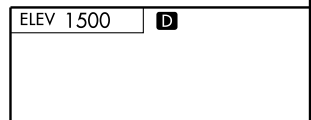
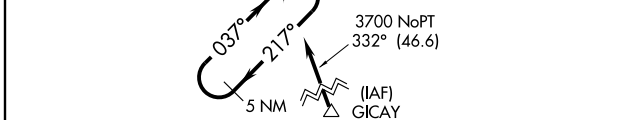
MISSED APPROACH: Climb to 3300 direct CALOT and hold.

ASOS 118.425	MINNEAPOLIS CENTER 124.2 270.3	UNICOM 123.0 (CTAF) 0
------------------------	--	---------------------------------



NC-1, 22 OCT 2009 to 19 NOV 2009

NC-1, 22 OCT 2009 to 19 NOV 2009



CATEGORY		A	B	C	D
LPV	DA	1746-1		250 (300-1)	
LNAV/VNAV	DA	1930-1½		434 (500-1½)	
LNAV	MDA	2000-1	504 (500-1)	2000-1½	504 (500-1½)
CIRCLING		2000-1	500 (500-1)	2000-1½	2060-2 560 (600-2)

REIL Rwy 4, 13, and 22 **0**
 MIRL Rwy 4-22 **0**
 HIRL Rwy 13-31 **0**