

RNAV (GPS) RWY 22

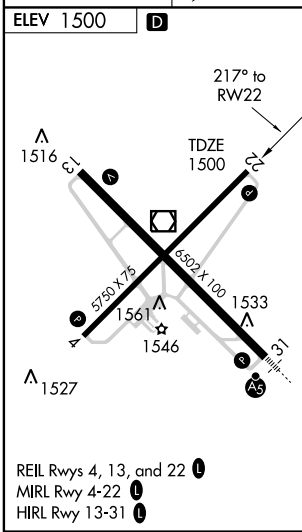
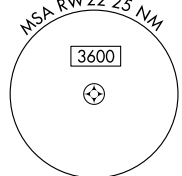
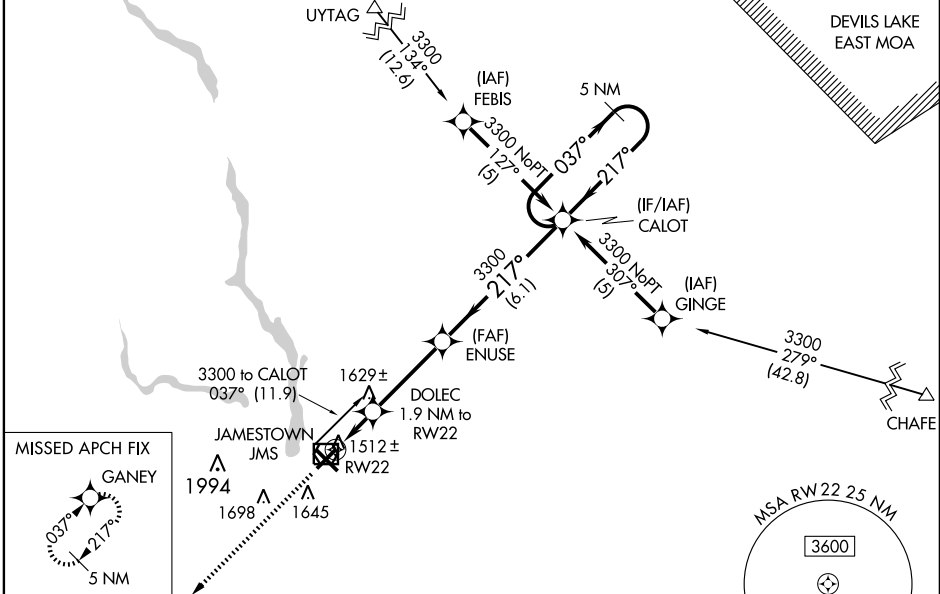
JAMESTOWN RGNL (JMS)

WAAS CH 70505 W22A	APP CRS 217°	Rwy Idg TDZE Apt Elev	5750 1500 1500
----------------------------------------	------------------------	-----------------------------	-------------------------------------------

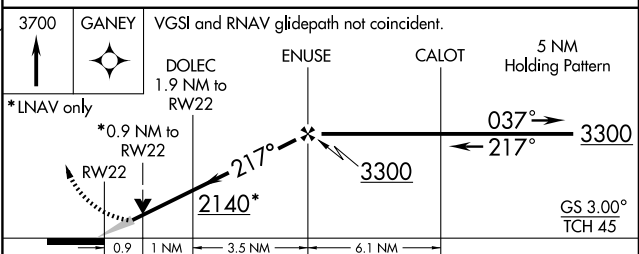
- ▼** Baro-VNAV NA when using Devils Lake altimeter setting.
- ▲** For uncompensated Baro-VNAV systems, LNAV/VNAV NA below -18°C (0°F) or above 46°C (114°F).
- W** DME/DME RNP-0.3 NA. VDP NA when using Devils Lake altimeter setting. If local altimeter setting not received, use Devils Lake altimeter setting and increase all DAs 172 feet and all MDAs 180 feet.

MISSED APPROACH: Climb to 3700 direct GANEY and hold.

ASOS 118.425	MINNEAPOLIS CENTER 124.2 270.3	UNICOM 123.0 (CTAF) 0
------------------------	------------------------------------------	---------------------------------



Procedure NA for arrivals at JMS VOR/DME on airway radials 034 CW 087.



CATEGORY	A	B	C	D
LPV DA		1750-1	250 (300-1)	
LNAV/VNAV DA		1772-1	272 (300-1)	
LNAV MDA		1800-1	300 (300-1)	
CIRCLING	1960-1	460 (500-1)	1960-1½ 460 (500-1½)	2060-2 560 (600-2)

NC-1, 22 OCT 2009 to 19 NOV 2009

NC-1, 22 OCT 2009 to 19 NOV 2009