

RNAV (GPS) RWY 13

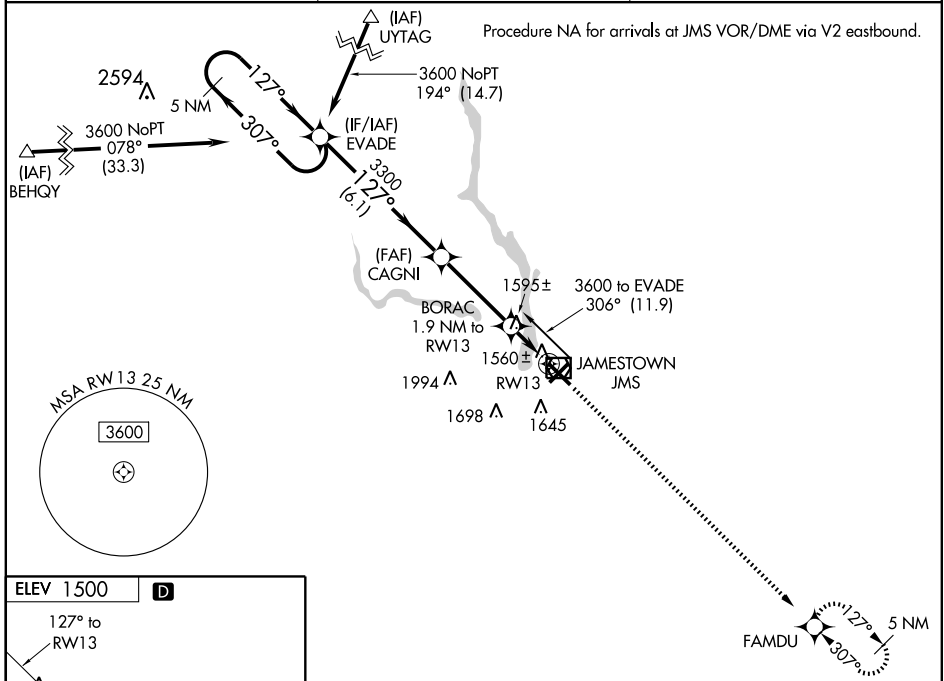
JAMESTOWN RGNL (JMS)

WAAS CH 65805 W13A	APP CRS 127°	Rwy Idg TDZE Apt Elev	6502 1500 1500
---------------------------------	------------------------	-----------------------------	---

V Baro-VNAV NA when using Devils Lake altimeter setting.
 For uncompensated Baro-VNAV systems, LNAV/VNAV NA below -18°C (0°F) or above 46°C (114°F).
W DME/DME RNP-0.3 NA. Visibility reduction by helicopters NA.
 VDP NA when using Devils Lake altimeter setting.
 If local altimeter setting not received, use Devils Lake altimeter setting and increase all DAs 172 feet and all MDAs 180 feet.

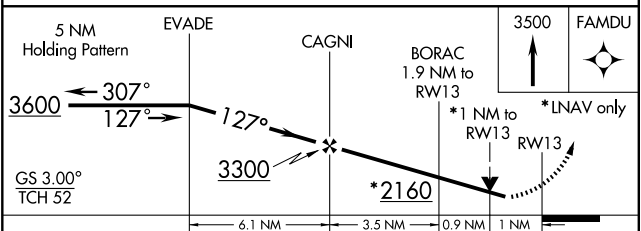
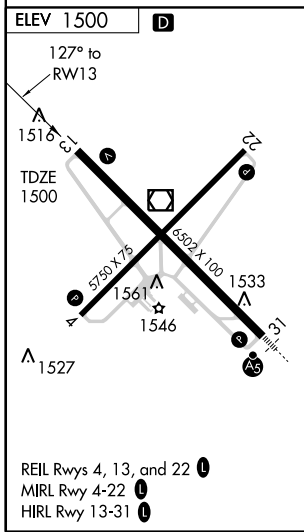
MISSED APPROACH: Climb to 3500 direct FAMDU and hold.

ASOS 118.425	MINNEAPOLIS CENTER 124.2 270.3	UNICOM 123.0 (CTAF) 1
------------------------	--	---------------------------------



NC-1, 22 OCT 2009 to 19 NOV 2009

NC-1, 22 OCT 2009 to 19 NOV 2009



CATEGORY	A	B	C	D
LPV DA		1787-1	287 (300-1)	
LNNAV/VNAV DA		1820-1	320 (400-1)	
LNNAV MDA		1860-1	360 (400-1)	1860-1½ 360 (400-1½)
CIRCLING	1960-1	460 (500-1)	1960-1½ 460 (500-1½)	2060-2 560 (600-2)