

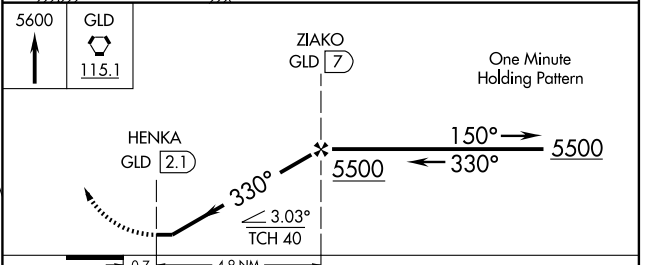
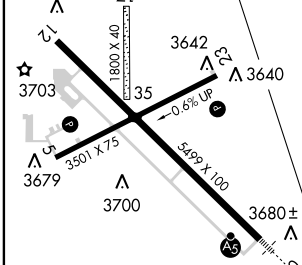
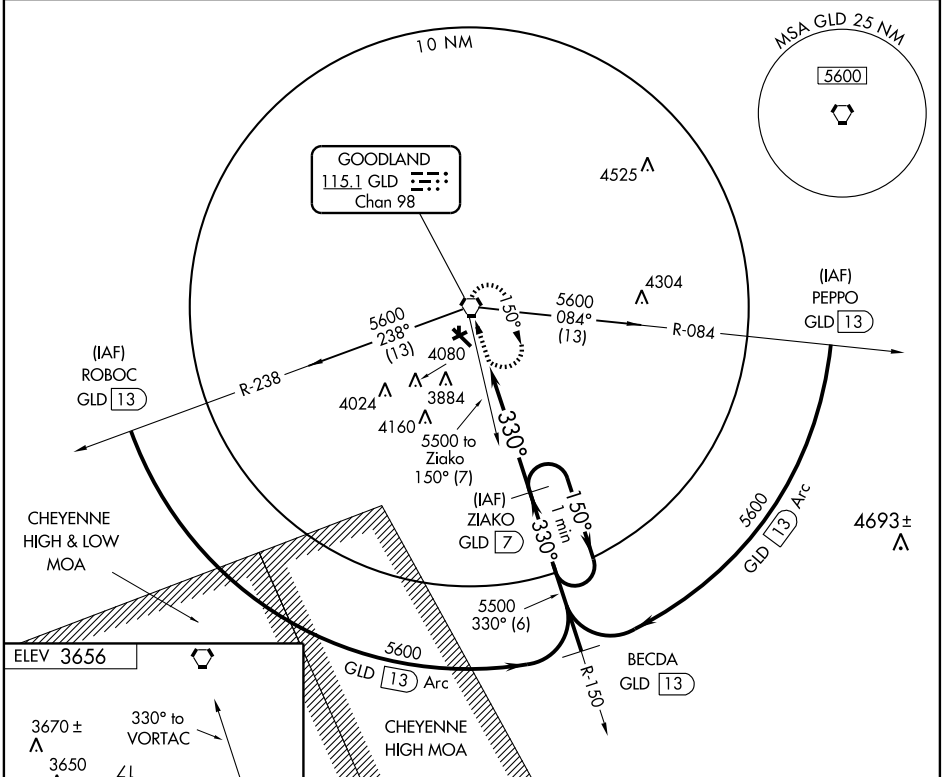
VORTAC GLD <b>115.1</b> Chan 98	APP CRS <b>330°</b>	Rwy Idg TDZE Apt Elev	<b>5499</b> <b>3652</b> <b>3656</b>
---------------------------------------	------------------------	-----------------------------	---

# VOR/DME RWY 30

GOODLAND/RENNER FIELD/GOODLAND MUNI (GLD)

<p>Circling not authorized south of runways 5 and 30.</p>	<p>MALSR</p>	<p>MISSED APPROACH: Climb to 5600 direct GLD VORTAC and hold.</p>
	<p>ASOS</p>	

<p>ASOS <b>121.025</b></p>	<p>DENVER CENTER <b>132.5 379.15</b></p>	<p>UNICOM <b>122.95 (CTAF) 0</b></p>
--------------------------------	--	--



REIL Rwy 12	TDZE				
MIRL Rwy 5-23 and 12-30	3652				
Knots	60	90	120	150	180
Min:Sec					
CATEGORY	A	B	C	D	
S-30	4040-½	388 (400-½)			NA
CIRCLING	4080-1 424 (500-1)	4120-1 464 (500-1)			NA

NC-2, 22 OCT 2009 to 19 NOV 2009

NC-2, 22 OCT 2009 to 19 NOV 2009