

GOODLAND, KANSAS

AL-684 (FAA)

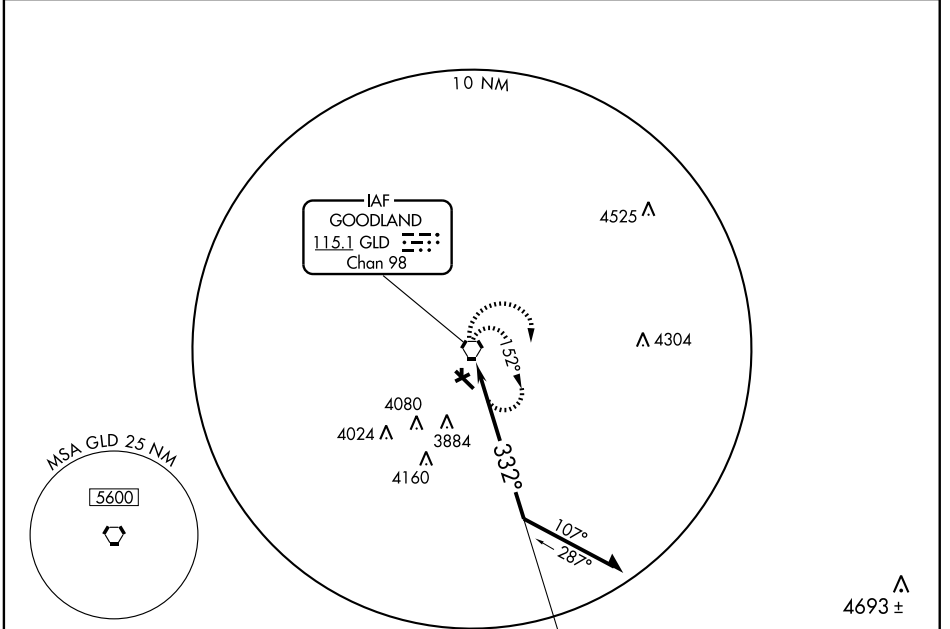
VORTAC GLD <b>115.1</b> Chan <b>98</b>	APP CRS <b>332°</b>	Rwy Idg <b>5499</b> TDZE <b>3652</b> Apt Elev <b>3656</b>
--	------------------------	---

# VOR RWY 30

GOODLAND/RENNER FIELD/GOODLAND MUNI (GLD)

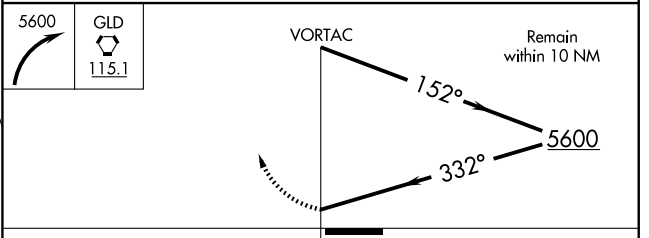
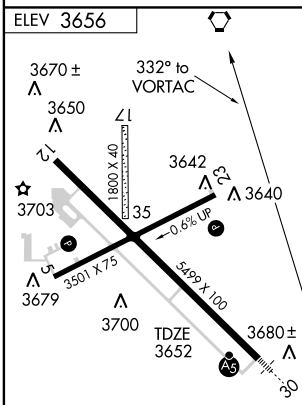
Circling not authorized south of runways 5 and 30.	MALSR	MISSED APPROACH: Climbing right turn to 5600 in GLD VORTAC holding pattern.
--	-------	---

ASOS <b>121.025</b>	DENVER CENTER <b>132.5 379.15</b>	UNICOM <b>122.95 (CTAF)</b>
------------------------	--------------------------------------	--------------------------------



NC-2, 22 OCT 2009 to 19 NOV 2009

NC-2, 22 OCT 2009 to 19 NOV 2009



CATEGORY	A	B	C	D
S-30	4160-½	508 (600-½)	NA	
CIRCLING	4160-1	504 (600-1)	NA	

GOODLAND, KANSAS  
Amdt 8 07186

GOODLAND/RENNER FIELD/GOODLAND MUNI (GLD)  
39° 22' N-101° 42' W  
**VOR RWY 30**