

# RNAV (GPS) RWY 23

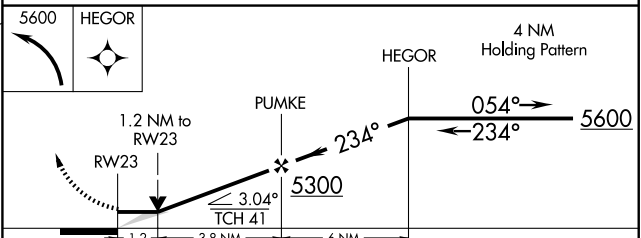
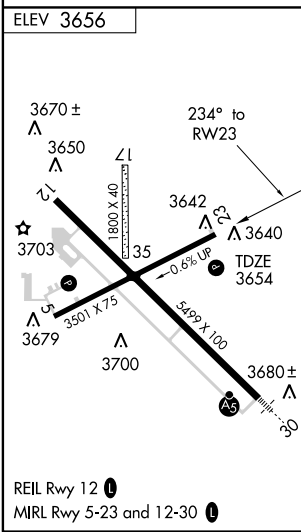
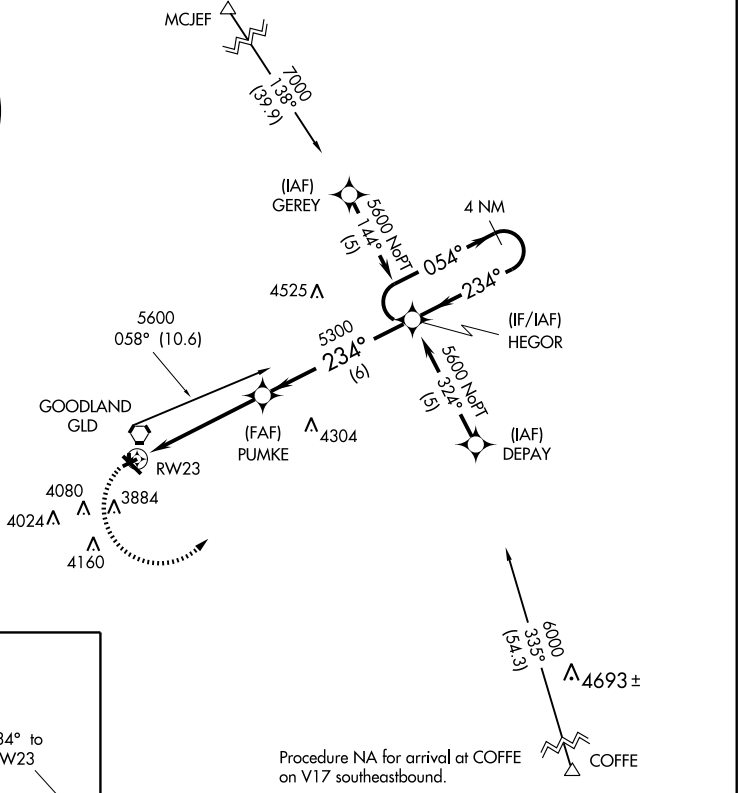
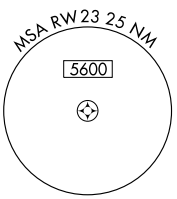
GOODLAND/RENNER FIELD/GOODLAND MUNI (GLD)

APP CRS <b>234°</b>	Rwy Idg <b>3501</b>
	TDZE <b>3654</b>
	Apt Elev <b>3656</b>

**▽** GPS or RNP-0.3 required. DME/DME RNP-0.3 NA.  
**△** NA Circling not authorized south of runways 5 and 30.  
 Procedure NA at night.

MISSED APPROACH: Climbing left turn to 5600 direct HEGOR WP and hold.

ASOS <b>121.025</b>	DENVER CENTER <b>132.5 379.15</b>	UNICOM <b>122.95 (CTAF) 0</b>
------------------------	--------------------------------------	----------------------------------



CATEGORY	A	B	C	D
LNAV MDA	4060-1	406 (500-1)	NA	
CIRCLING	4080-1 424 (500-1)	4120-1 464 (500-1)	NA	

# RNAV (GPS) RWY 23

NC-2, 22 OCT 2009 to 19 NOV 2009

NC-2, 22 OCT 2009 to 19 NOV 2009