

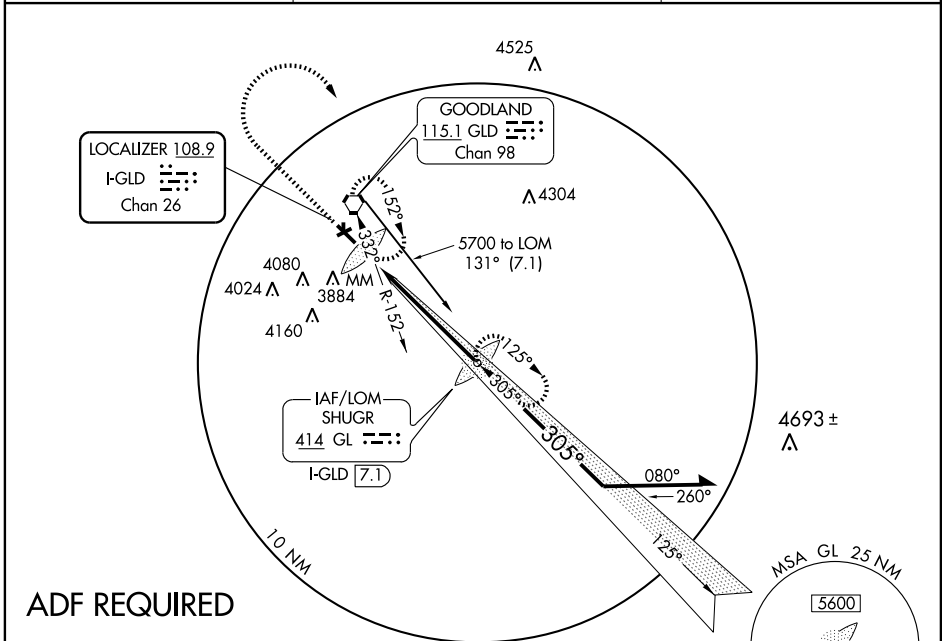
ILS or LOC RWY 30

GOODLAND/RENNER FIELD/GOODLAND MUNI (G.LD)

LOC I-GLD 108.9 Chan 26	APP CRS 305°	Rwy Idg TDZE Apt Elev	5499 3652 3656
---	------------------------	-----------------------------	---

<p>Circling not authorized south of runways 5 and 30. ADF required.</p>	<p>MALS</p>	<p>MISSED APPROACH: Climb to 4500, then climbing right turn to 5700 direct SHUGR LOM and hold.</p>
---	-------------	--

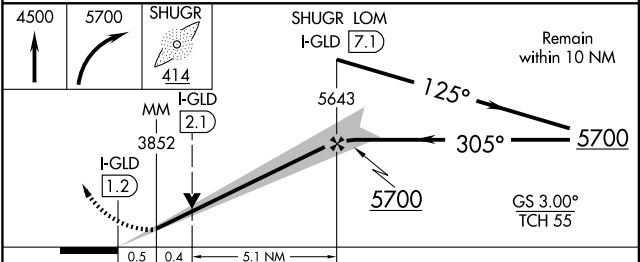
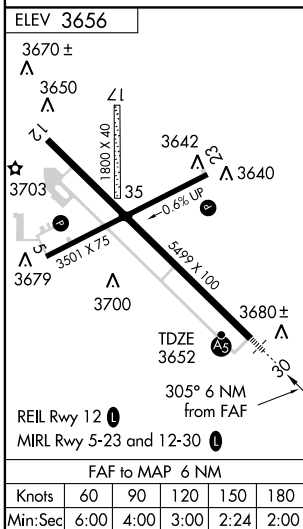
ASOS 121.025	DENVER CENTER 132.5 379.15	UNICOM 122.95 (CTAF)
------------------------	--------------------------------------	--------------------------------



NC-2, 22 OCT 2009 to 19 NOV 2009

NC-2, 22 OCT 2009 to 19 NOV 2009

ADF REQUIRED



CATEGORY	A	B	C	D
S-ILS-30	3852-½	200 (200-½)		NA
S-LOC-30	4020-½	368 (400-½)		NA
CIRCLING	4080-1 424 (500-1)	4120-1 464 (500-1)		NA

ILS or LOC RWY 30