

RNAV (GPS) RWY 13

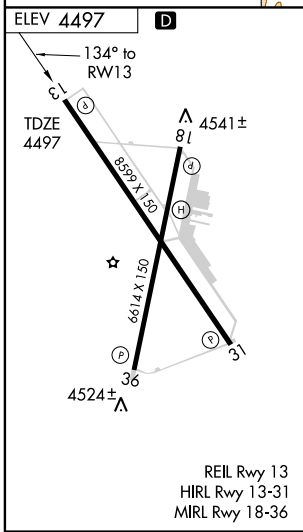
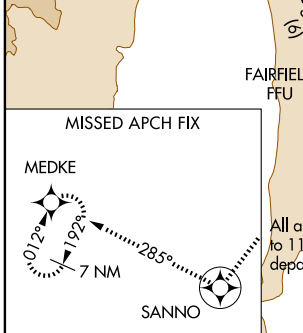
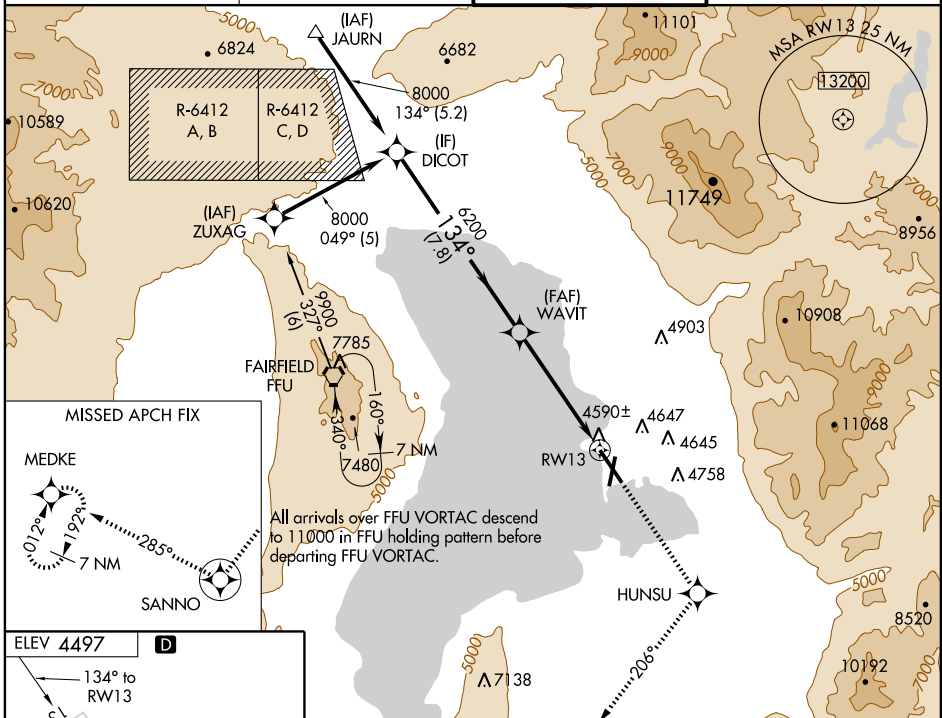
PROVO MUNI (PVU)

WAAS CH 97307 W13A	APP CRS 134°	Rwy Idg TDZE Apt Elev	8599 4497 4497
--	------------------------	-----------------------------	---

⚠ Circling NA East of Rwy 18 and 31.
For uncompensated Baro-VNAV systems, LNAV/VNAV NA below -23°C (-9°F) or above 40°C (104°F).
DME/DME RNP- 0.3 NA.

MISSED APPROACH: Climb to 10300 direct HUNSU and via track 206° to SANNO and via track 285° to MEDKE and hold, continue climb-in-hold to 10300.

ATIS 135.175	SALT LAKE CITY APP CON 124.3 322.3	PROVO TOWER * 125.3 (CTAF)	GND CON 119.4
------------------------	--	--------------------------------------	-------------------------



Procedure Turn NA	10300	HUNSU	SANNNO	MEDKE
	↑	✦	⊙	✦
		trk 206°	trk 285°	
8000	*LNAV only			
GS 3.00° TCH 50	WAVIT			
	*1.6 NM to RWY 13			
	RWY 13			
	7.8 NM 3.5 NM 1.6 NM			
CATEGORY	A	B	C	D
LPV DA		4770-1	273 (300-1)	
LNAV/VNAV DA		4940-1½	443 (500-1½)	
LNAV MDA	5040-1	543 (600-1)	5040-1½ 543 (600-1½)	5040-1¾ 543 (600-1¾)
CIRCLING	5040-1	543 (600-1)	5040-1½ 543 (600-1½)	5060-2 563 (600-2)

SW-4, 22 OCT 2009 to 19 NOV 2009

SW-4, 22 OCT 2009 to 19 NOV 2009