

IOWA CITY, IOWA

AL-682 (FAA)

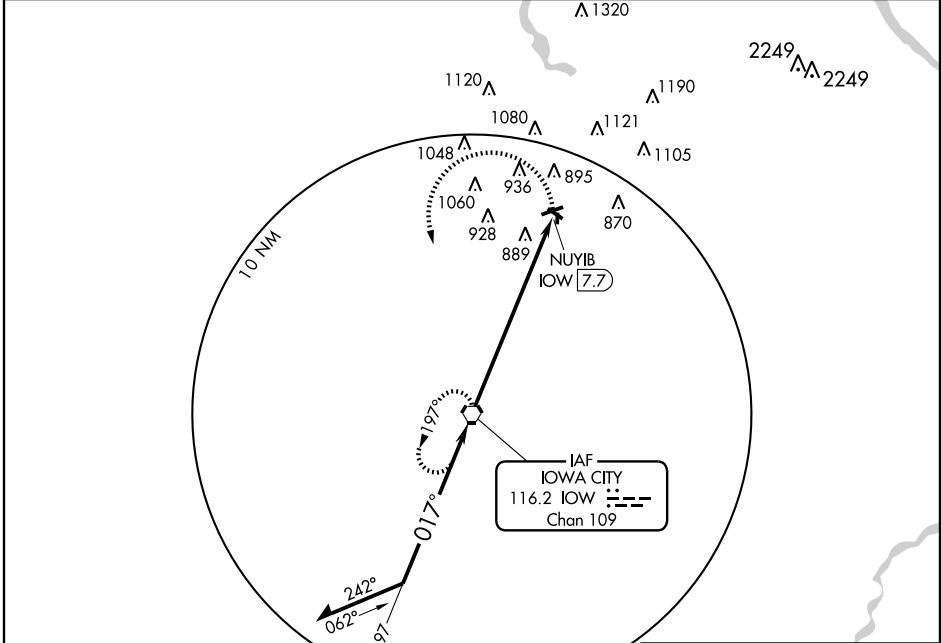
VOR-A
IOWA CITY MUNI (IOW)

VORTAC IOW 116.2 Chan 109	APP CRS 017°	Rwy Idg TDZE Apt Elev	N/A N/A 668
---	------------------------	-----------------------------	--

⚠ If local altimeter setting not received, use Cedar Rapids altimeter setting and increase all MDAs 80 feet.

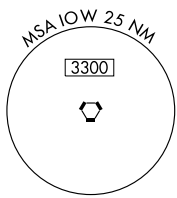
⚠ MISSED APPROACH: Climbing left turn to 2600 direct IOW VORTAC and hold.

ASOS 128.075	CEDAR RAPIDS APP CON * 119.7 266.8	CLNC DEL 119.05	UNICOM 122.8 (CTAF) 0 *
------------------------	--	---------------------------	--



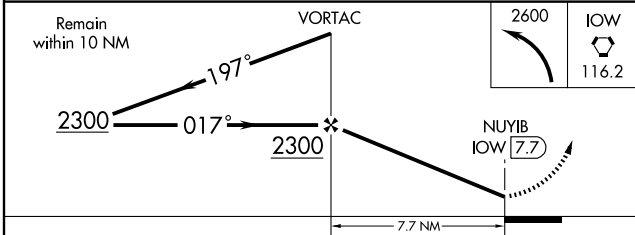
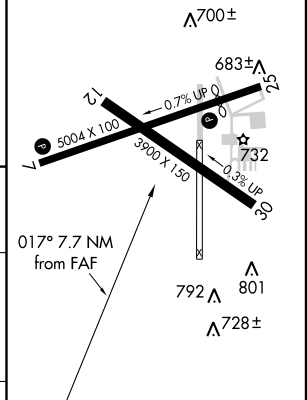
NC-3, 22 OCT 2009 to 19 NOV 2009

NC-3, 22 OCT 2009 to 19 NOV 2009



ELEV 668 **D**

MIRL Rwy 7-25 and 12-30 **0**



CATEGORY	A	B	C	D	FAF to MAP 7.7 NM					
CIRCLING	1280-1 612 (700-1)		NA		Knots	60	90	120	150	180
					Min:Sec	7:42	5:08	3:51	3:05	2:34

IOWA CITY, IOWA
Orig 09071

41°38'N - 91°33'W

IOWA CITY MUNI (IOW)
VOR-A