

RNAV (GPS) RWY 25

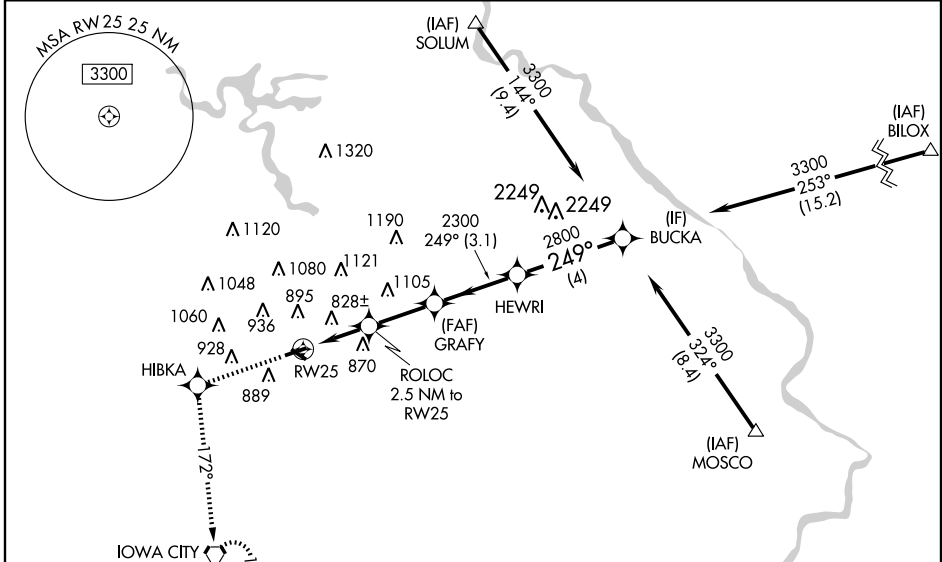
IOWA CITY MUNI (IOW)

| | | |
|--|------------------------|---|
| WAAS CH 58207 W25A | APP CRS 249° | Rwy Idg 4196 TDZE 657 Apt Elev 684 |
|--|------------------------|---|

⚠ For uncompensated Baro-VNAV systems, LNAV/VNAV NA below -16°C (4°F) or above 54°C (130°F).
⚠ DME/DME RNP-0.3 NA. Visibility reduction by helicopters NA.
 When local altimeter setting not received, use Cedar Rapids altimeter setting and increase all DA 66 feet and LPV and LNAV/VNAV all Cats visibility 1/4 mile, increase all MDA 80 feet.
 Baro-VNAV and VDP NA when using Cedar Rapids altimeter setting.

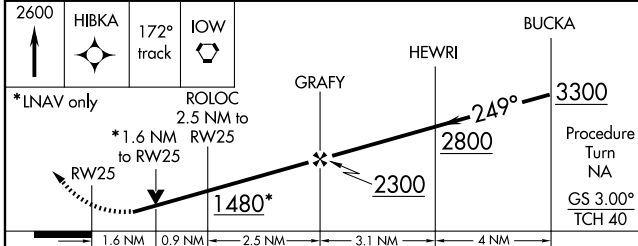
MISSED APPROACH: Climb to 2600 direct HIBKA and via 172° track to IOW VORTAC and hold.

| | | | |
|------------------------|---|---------------------------|--|
| ASOS 128.075 | CEDAR RAPIDS APP CON* 119.7 266.8 | CLNC DEL 119.05 | UNICOM 122.8 (CTAF) 0 * |
|------------------------|---|---------------------------|--|

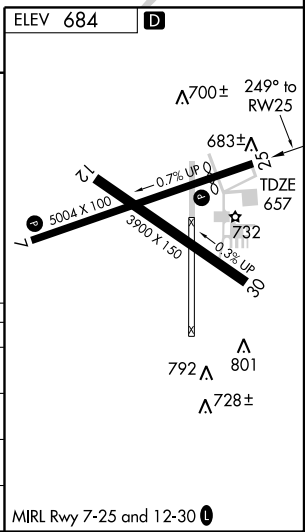


NC-3, 22 OCT 2009 to 19 NOV 2009

NC-3, 22 OCT 2009 to 19 NOV 2009



| CATEGORY | A | B | C | D |
|--------------|---------|--------------|---|----|
| LPV DA | 1051-1½ | 394 (400-1½) | | NA |
| LNAV/VNAV DA | 1161-1¾ | 504 (500-1¾) | | NA |
| LNAV MDA | 1200-1 | 543 (600-1) | | NA |
| CIRCLING | 1260-1 | 576 (600-1) | | NA |



MIRL Rwy 7-25 and 12-30 **0**