

PRICE, UTAH

AL-681 (FAA)

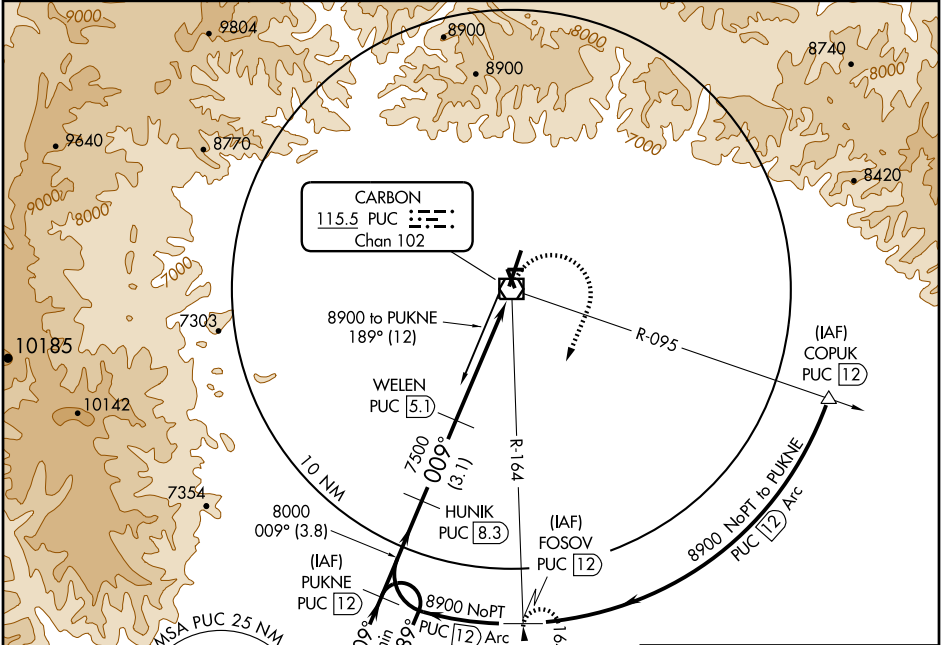
VOR/DME PUC 115.5 Chan 102	APP CRS 009°	Rwy Idg TDZE Apt Elev 8313 5835 5953
------------------------------------------------	------------------------	--------------------------------------------------------------------------

VOR/DME RWY 36

PRICE/CARBON COUNTY RGNL/BUCK DAVIS FIELD (PUC)

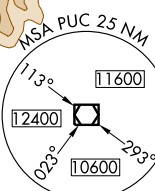
	MALSF	MISSED APPROACH: Climbing right turn to 10000 via heading 200° and PUC VOR/DME R-164 to FOSOV/12 DME and hold.

ASOS 135.425	SALT LAKE CENTER 133.9 370.85	UNICOM 122.8 (CTAF)
------------------------	-----------------------------------------	-------------------------------

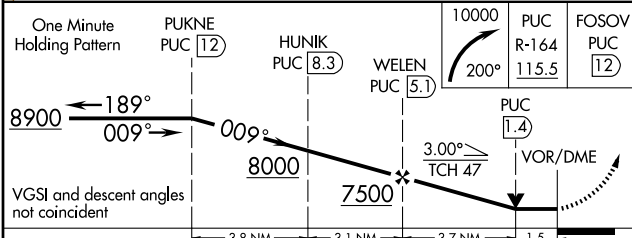
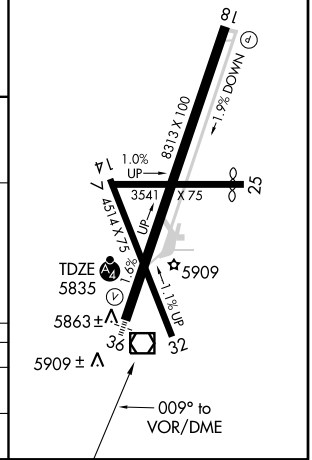


SW-4, 22 OCT 2009 to 19 NOV 2009

SW-4, 22 OCT 2009 to 19 NOV 2009



ELEV 5953
MIRL Rwys 14-32 and 18-36



CATEGORY	A	B	C	D
S-36	6240-1 405 (300-1)		6240-1¼ 405 (300-1¼)	
CIRCLING	6660-1 707 (800-1)	6740-1¼ 787 (800-1¼)	6820-2½ 867 (900-2½)	6980-3 1027 (1100-3)

PRICE, UTAH
Orig 09127

PRICE/CARBON COUNTY RGNL/BUCK DAVIS FIELD (PUC)
39°37'N-110°45'W

VOR/DME RWY 36