

PRICE, UTAH

AL-681 (FAA)

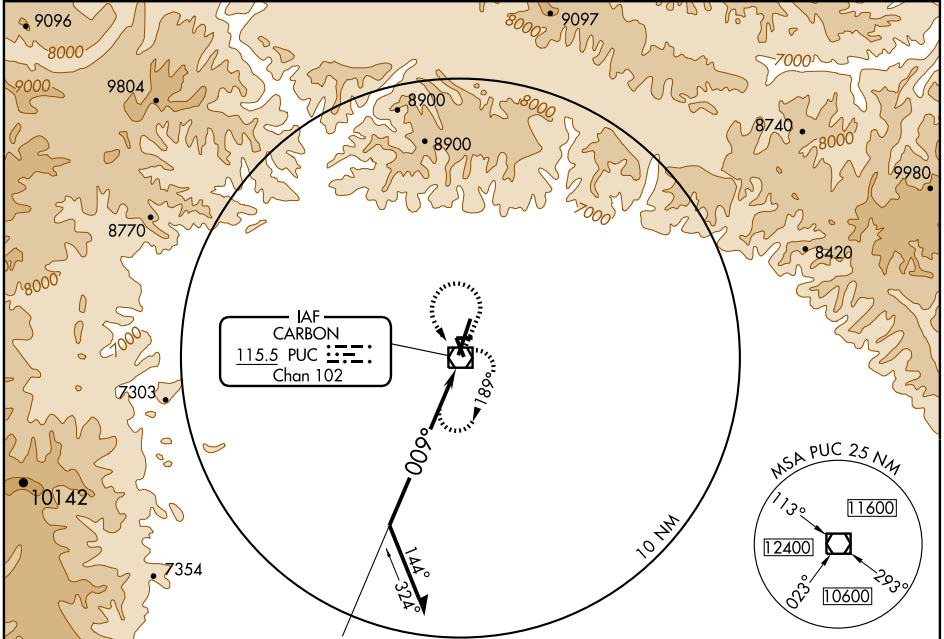
VOR RWY 36

VOR/DME PUC 115.5 Chan 102	APP CRS 009°	Rwy Idg TDZE Apt Elev	8313 5835 5953
--	------------------------	-----------------------------	---

PRICE / CARBON COUNTY RGNL / BUCK DAVIS FIELD (PUC)

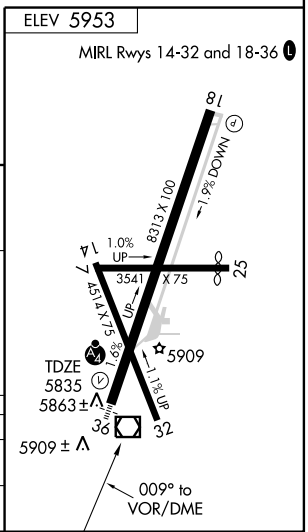
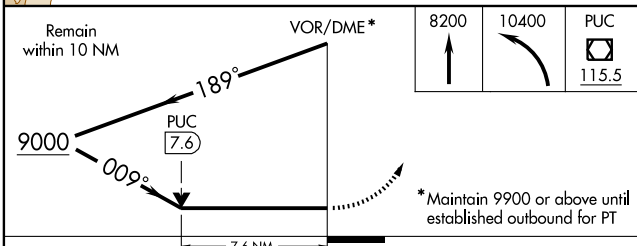
	MALSF 	MISSED APPROACH: Climb to 8200, then climbing left turn to 10400 direct PUC VOR/DME and hold.
--	------------------	--

ASOS 135.425	SALT LAKE CENTER 133.9 370.85	UNICOM 122.8 (CTAF)
------------------------	---	-------------------------------



SW-4, 22 OCT 2009 to 19 NOV 2009

SW-4, 22 OCT 2009 to 19 NOV 2009



CATEGORY	A	B	C	D
S-36	7880-1¼ 2045 (2000-1¼)	7880-1½ 2045 (2000-1½)	7880-3	2045 (2000-3)
CIRCLING	7880-1¼ 1927 (2000-1¼)	7880-1½ 1927 (2000-1½)	7880-3	1927 (2000-3)

PRICE, UTAH
Amdt 2 09127

PRICE / CARBON COUNTY RGNL / BUCK DAVIS FIELD (PUC)
39°37'N-110°45'W

VOR RWY 36