

PRICE, UTAH

AL-681 (FAA)

RNAV (GPS) RWY 36

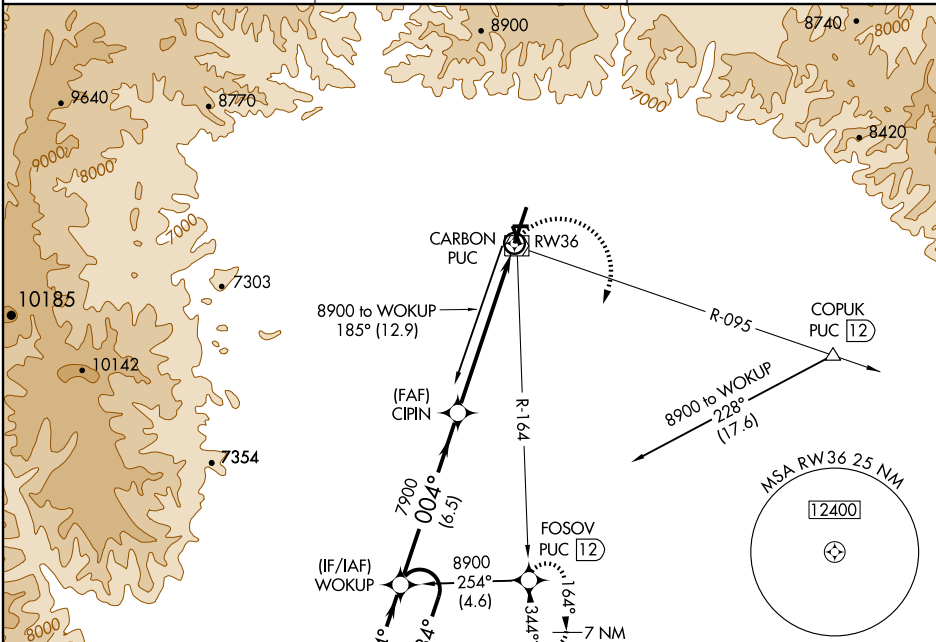
PRICE/ CARBON COUNTY RGNL/BUCK DAVIS FIELD AIRPORT (PUC)

APP CRS	Rwy Idg	8313
004°	TDZE	5835
	Apt Elev	5953

NA Circling not authorized at night to Rwy 18, 25, and 32.
GPS or RNP- 0.3 required. DME/DME RNP- 0.3 NA.

MALSF MISSED APPROACH: Climbing right turn to 10000 direct FOSOV WP and hold.

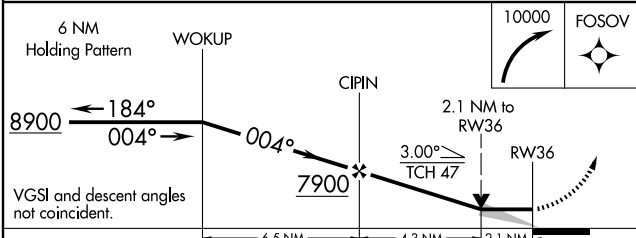
ASOS 135.425	SALT LAKE CENTER 133.9 370.85	UNICOM 122.8 (CTAF)
------------------------	---	-------------------------------



SW-4, 22 OCT 2009 to 19 NOV 2009

SW-4, 22 OCT 2009 to 19 NOV 2009

Procedure NA for arrival at COPUK via V134 eastbound.



ELEV 5953

MIRL Rwy 14-32 and 18-36

TDZE 5835
5863 ±
5909 ±

36 32 25

004° to RWY 36

CATEGORY	A	B	C	D
LNAV MDA	6400-1	565 (500-1)	6400-1½ 565 (500-1½)	6400-1¾ 565 (500-1¾)
CIRCLING	6660-1 707 (800-1)	6740-1¼ 787 (800-1¼)	6820-2½ 867 (900-2½)	6980-3 1027 (1100-3)

PRICE, UTAH
Orig 09127

PRICE/ CARBON COUNTY RGNL/BUCK DAVIS FIELD AIRPORT (PUC)
39°37'N-110°45'W

RNAV (GPS) RWY 36