

CAMARILLO, CALIFORNIA

AL-680 (FAA)

# RNAV (GPS) Z RWY 26

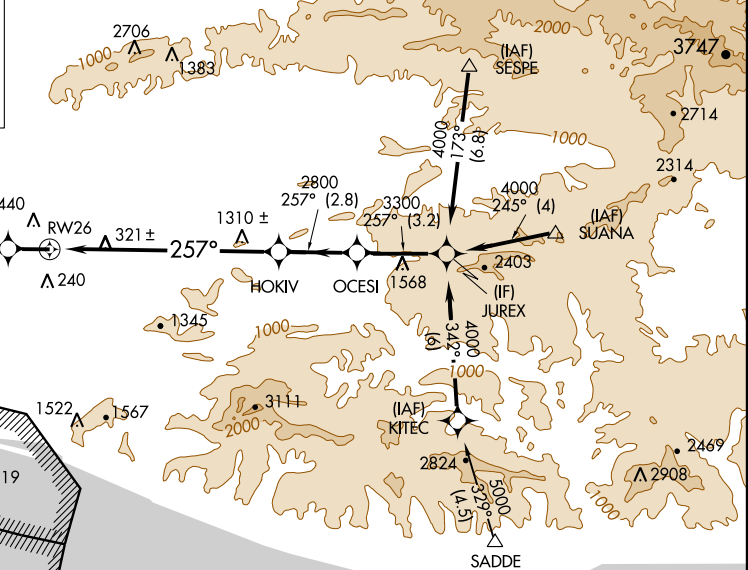
CAMARILLO (CMA)

WAAS CH 58202 W26A	APP CRS 257°	Rwy Idg TDZE Apt Elev	6013 77 77
--------------------------	-----------------	-----------------------------	------------------

<p><b>V</b> DME/DME RNP -0.3 NA. If local altimeter setting not received, use Oxnard altimeter setting and increase DA 18 feet.</p> <p><b>A</b></p> <p><b>W</b></p>	<p>MISSED APPROACH: Climb to 3000 direct VAANG and via 253° track to HATLI and hold.</p>
---	--

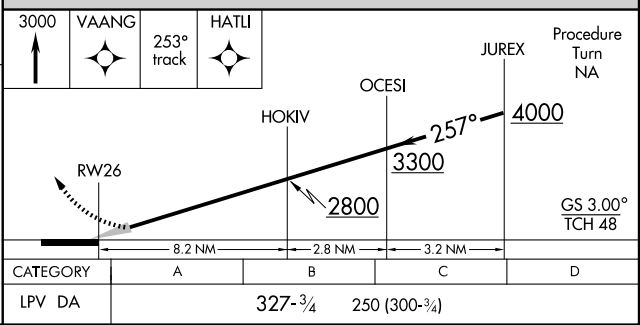
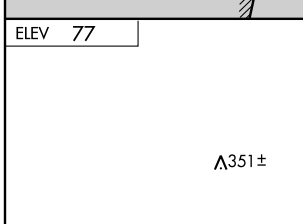
ATIS 126.025	POINT MUGU APP CON * 124.7 335.5	CAMARILLO TOWER * 128.2(CTAF) 0 269.4	GND CON 121.8	CLNC DEL 121.8	POINT MUGU CLNC DEL 120.75 279.55
-----------------	-------------------------------------	--	------------------	-------------------	--------------------------------------

MISSED APCH FIX Procedure NA for arrivals at SUANA via V326 eastbound and arrivals at SESPE via V186-597 westbound.



SW-3, 22 OCT 2009 to 19 NOV 2009

SW-3, 22 OCT 2009 to 19 NOV 2009



CAMARILLO, CALIFORNIA  
Orig 09127

34°13'N-119°06'W

# RNAV (GPS) Z RWY 26

CAMARILLO (CMA)