

RNAV (GPS) Y RWY 26

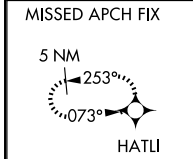
CAMARILLO (CMA)

APP CRS 252°	Rwy Idg 6013
	TDZE 77
	Apt Elev 77

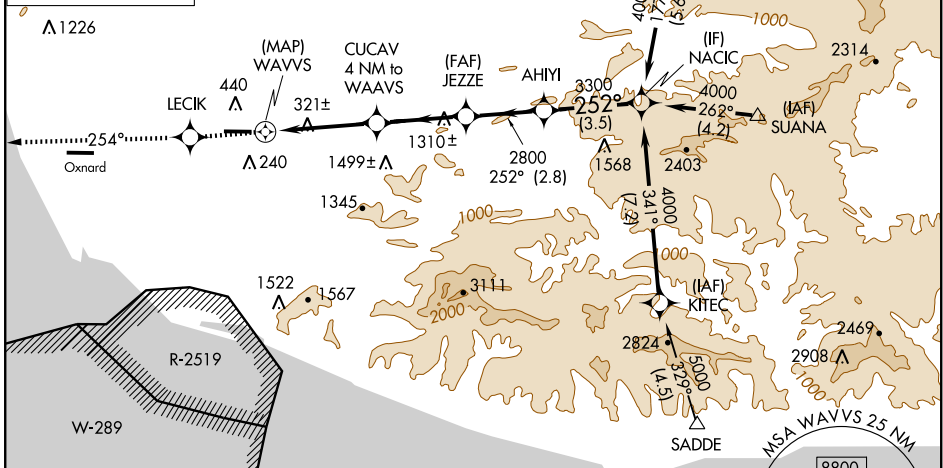
▽ Circling NA north of Rwy 8-26. DME/DME RNP-0.3 NA.
⚠ If local altimeter setting not received, use Oxnard altimeter setting and increase all MDA's 20 feet.
 VDP NA when using Oxnard altimeter setting.

MISSED APPROACH: Climb to 3000 direct LECIK and via 254° track to HATLI and hold.

ATIS 126.025	POINT MUGU APP CON * 124.7 335.5	CAMARILLO TOWER * 128.2(CTAF) 0 269.4	GND CON 121.8	CLNC DEL 121.8	POINT MUGU CLNC DEL 120.75 279.55
------------------------	--	---	-------------------------	--------------------------	---



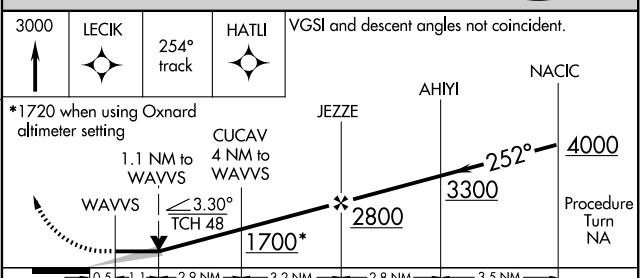
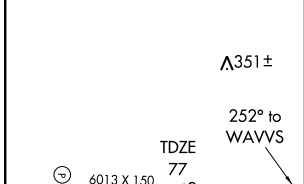
Procedure NA for arrivals at SUANA via V326 eastbound and arrivals at SESPE via V186-597 westbound.



SW-3, 22 OCT 2009 to 19 NOV 2009

SW-3, 22 OCT 2009 to 19 NOV 2009

ELEV	77
------	----



CATEGORY	A	B	C	D
LNAV MDA	620-1	543 (600-1)	620-1½ 543 (600-1½)	620-1¾ 543 (600-1¾)
CIRCLING	620-1	543 (600-1)	620-1½ 543 (600-1½)	640-2 563 (600-2)