

# ILS or LOC RWY 34

PORTSMOUTH INTL AT PEASE (PSM)

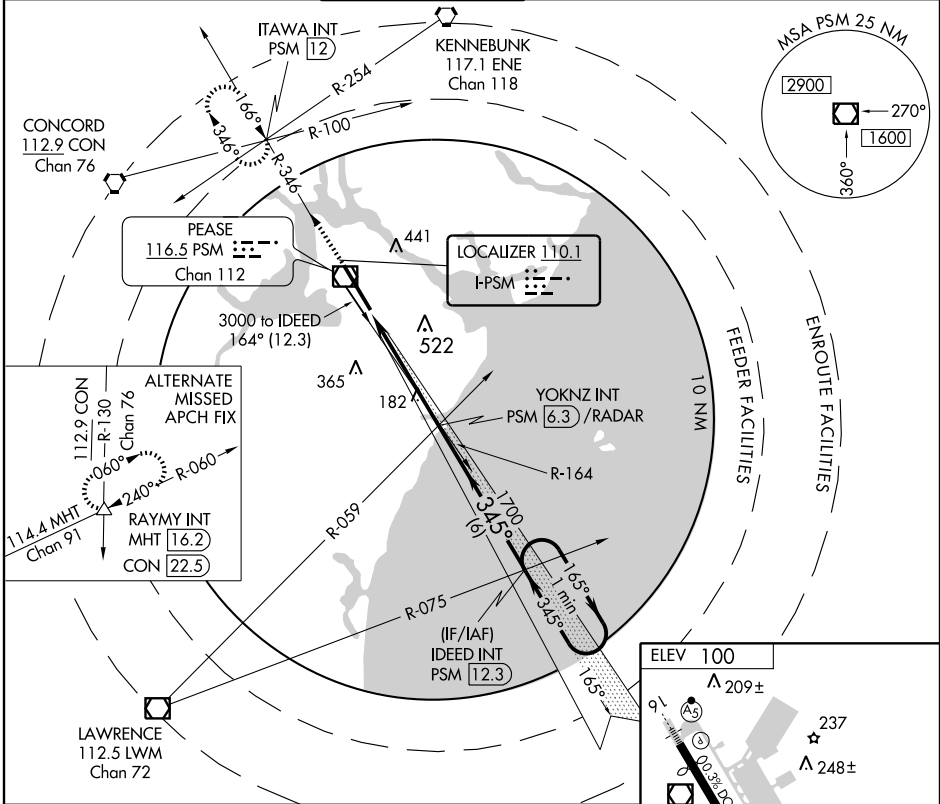
LOC I-PSM <b>110.1</b>	APP CRS <b>345°</b>	Rwy Idg TDZE Apt Elev	<b>11321</b> <b>84</b> <b>100</b>
---------------------------	------------------------	-----------------------------	---

**ASR** Circling NA east of Rwy 16-34.  
For inoperative MALSR, increase S-ILS 34 Cat E visibility to RVR 4000 and S-LOC 34 Cat E visibility to RVR 6000.



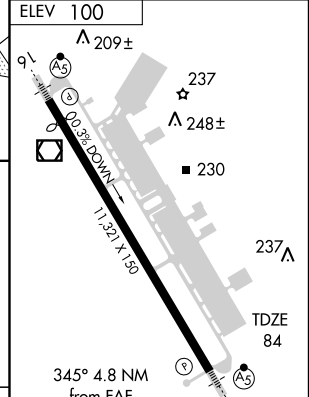
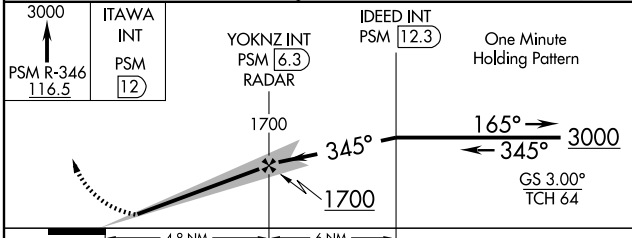
**MISSED APPROACH:** Climb to 3000 via PSM R-346 to ITAWA Int/PSM 12 DME and hold.

ATIS <b>132.05 273.5</b>	BOSTON APP CON <b>125.05 269.4</b>	PEASE TOWER <b>128.4 269.0</b>	GND CON <b>120.95 275.8</b>	CLNC DEL <b>335.8</b>	UNICOM <b>122.95</b>
-----------------------------	---------------------------------------	-----------------------------------	--------------------------------	--------------------------	-------------------------



NE-1, 22 OCT 2009 to 19 NOV 2009

NE-1, 22 OCT 2009 to 19 NOV 2009



3000	ITAWA INT PSM 12	YOKNZ INT PSM 6.3 RADAR	IDEED INT PSM 12.3	One Minute Holding Pattern	
PSM R-346 116.5					
		1700	1700	3000	
		345°	165°	345°	
		4.8 NM	6 NM		
CATEGORY	A	B	C	D	E
S-ILS 34	284/24 200 (200-½)				
S-LOC 34	440/24 356 (400-½)				
CIRCLING	480-1 380 (400-1)	560-1 460 (500-1)	560-1½ 460 (500-1½)	680-2	580 (600-2)

HIRL Rwy 16-34	FAF to MAP 4.8 NM				
Knots	60	90	120	150	180
Min:Sec	4:48	3:12	2:24	1:55	1:36