

DODGE CITY, KANSAS

AL-676 (FAA)

VOR RWY 14
DODGE CITY RGNL (DDC)

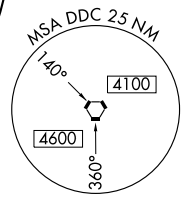
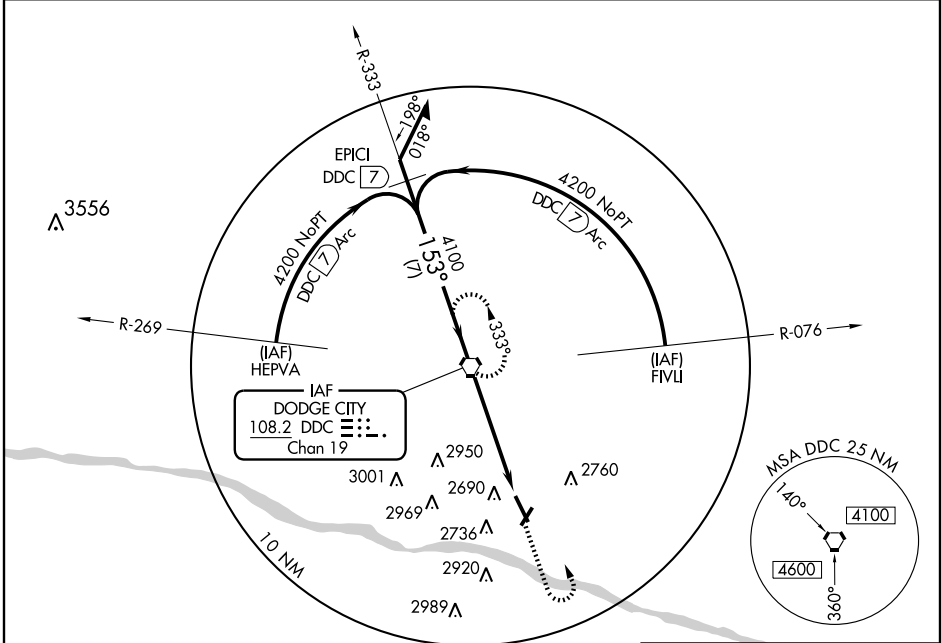
VORTAC DDC 108.2 Chan 19	APP CRS 153°	Rwy Idg TDZE Apt Elev	6329 2583 2594
---------------------------------------	------------------------	-----------------------------	---

If local altimeter setting not received, use Garden City altimeter setting and increase all MDA's 140 feet. For inoperative MALS/R, increase S-14 Cat D visibility to 1 1/4 mile. VDP NA with Garden City altimeter setting.



MISSED APPROACH: Climb to 4200 then left turn direct DDC VORTAC and hold.

ASOS 118,525	KANSAS CITY CENTER 125.2 269.4	UNICOM 122.7 (CTAF)
------------------------	--	-------------------------------

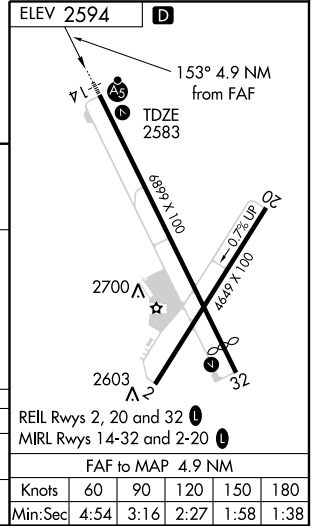


NC-2, 22 OCT 2009 to 19 NOV 2009

NC-2, 22 OCT 2009 to 19 NOV 2009



CATEGORY	A	B	C	D
	3000-1/2 417 (500-1/2)	3060-1 466 (500-1)	3000-3/4 417 (500-3/4)	3000-1 417 (500-1)
CIRCLING	3040-1 446 (500-1)	3060-1 466 (500-1)	3060-1 1/2 466 (500-1 1/2)	3160-2 566 (600-2)



DODGE CITY, KANSAS
Amdt 19 08325

37° 46' N-99° 58' W

DODGE CITY RGNL (DDC)
VOR RWY 14

REIL Rwys 2, 20 and 32
MIRL Rwys 14-32 and 2-20

FAF to MAP 4.9 NM					
Knots	60	90	120	150	180
Min:Sec	4:54	3:16	2:27	1:58	1:38