

RNAV (GPS) RWY 32

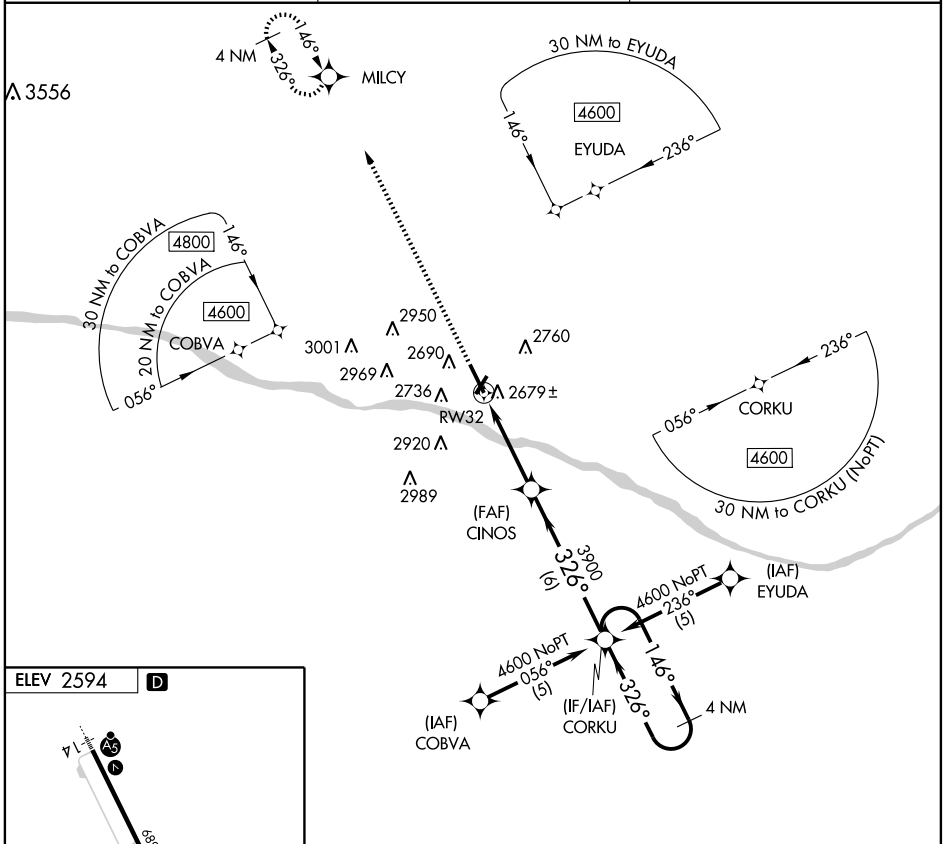
DODGE CITY RGNL (DDC)

APP CRS 326°	Rwy Idg 6329
	TDZE 2591
	Apt Elev 2594

▲ DME/DME RNP-0.3 NA. If local altimeter setting not received, use Garden City altimeter setting and increase all MDAs 140 feet. VDP NA with Garden City altimeter setting.

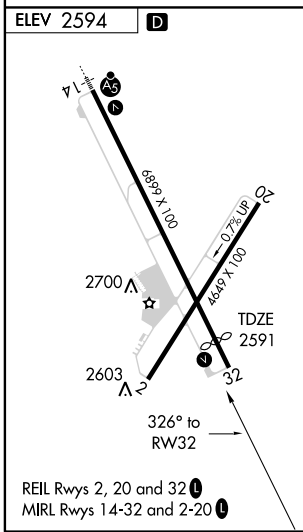
MISSED APPROACH: Climb to 4600 direct MILCY and hold.

ASOS 118.525	KANSAS CITY CENTER 125.2 269.4	UNICOM 122.7 (CTAF) ①
------------------------	--	---------------------------------



NC-2, 22 OCT 2009 to 19 NOV 2009

NC-2, 22 OCT 2009 to 19 NOV 2009



4600 MILCY	CORKU 4 NM Holding Pattern		
↑	CINOS		
1.1 NM to RW32	326° heading		
3900	146° heading		
1.1	2.9 NM	6 NM	4600
3.02° TCH 40			
CATEGORY	A	B	C
LNAV MDA	2980-1 389 (400-1)		2980-1½ 389 (400-1½)
CIRCLING	3040-1 446 (500-1)	3060-1 466 (500-1)	3060-1½ 466 (500-1½) 3160-2 566 (600-2)