


# RNAV (GPS) RWY 14

DODGE CITY RGNL (DDC)

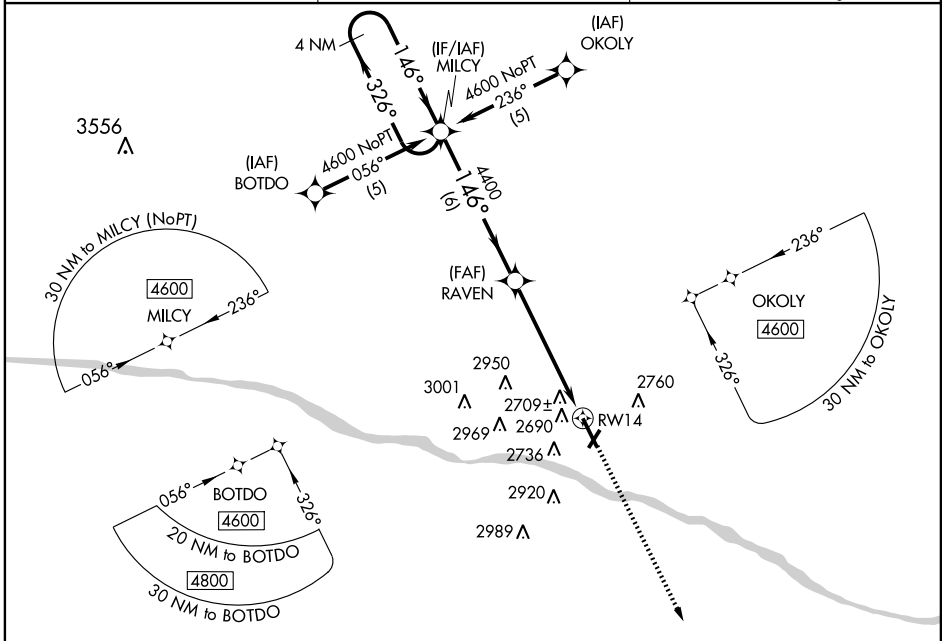
WAAS CH <b>65609</b> <b>W14A</b>	APP CRS <b>146°</b>	Rwy Idg TDZE <b>6329</b> <b>2583</b> Apt Elev <b>2594</b>
--	------------------------	--

**⚠** DME/DME RNP-0.3 NA. BARO-VNAV NA below -20°C (-4°F). If local altimeter setting not received, use Garden City altimeter setting and increase all DA/MDAs 140 feet. VDP and BARO-VNAV NA with Garden City altimeter setting. For inoperative MALSR, increase LPV all CATs visibility to 1, and LNAV Cat D visibility to 1½.

**MALSR** 

**MISSED APPROACH:**  
Climb to 4600 direct CORKU and hold.

ASOS <b>118.525</b>	KANSAS CITY CENTER <b>125.2 269.4</b>	UNICOM <b>122.7 (CTAF) 0</b>
------------------------	--	---------------------------------



NC-2, 22 OCT 2009 to 19 NOV 2009

NC-2, 22 OCT 2009 to 19 NOV 2009

**ELEV 2594** **D**

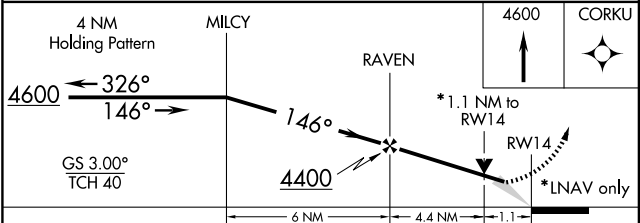
TDZE 2583

2700

2603

REIL Rwy 2, 20 and 32 **0**

MIRL Rwy 14-32 and 2-20 **0**



CATEGORY	A	B	C	D
LPV DA		2833-½	250 (300-½)	
LNAV/VNAV DA		2988-1	405 (400-1)	
LNAV MDA		2960-½	377 (400-½)	2960-1 377 (400-1)
CIRCLING	3040-1½ 446 (500-1½)	3060-1½	466 (500-1½)	3160-2 566 (600-2)