

HYANNIS, MASSACHUSETTS

AL-675 (FAA)

VOR/DME M <sup>VY</sup>	APP CRS	Rwy ldg	<b>5019</b>
<b>114.5</b>	<b>058°</b>	TDZE	<b>45</b>
Chan <b>92</b>		Api Elev	<b>54</b>

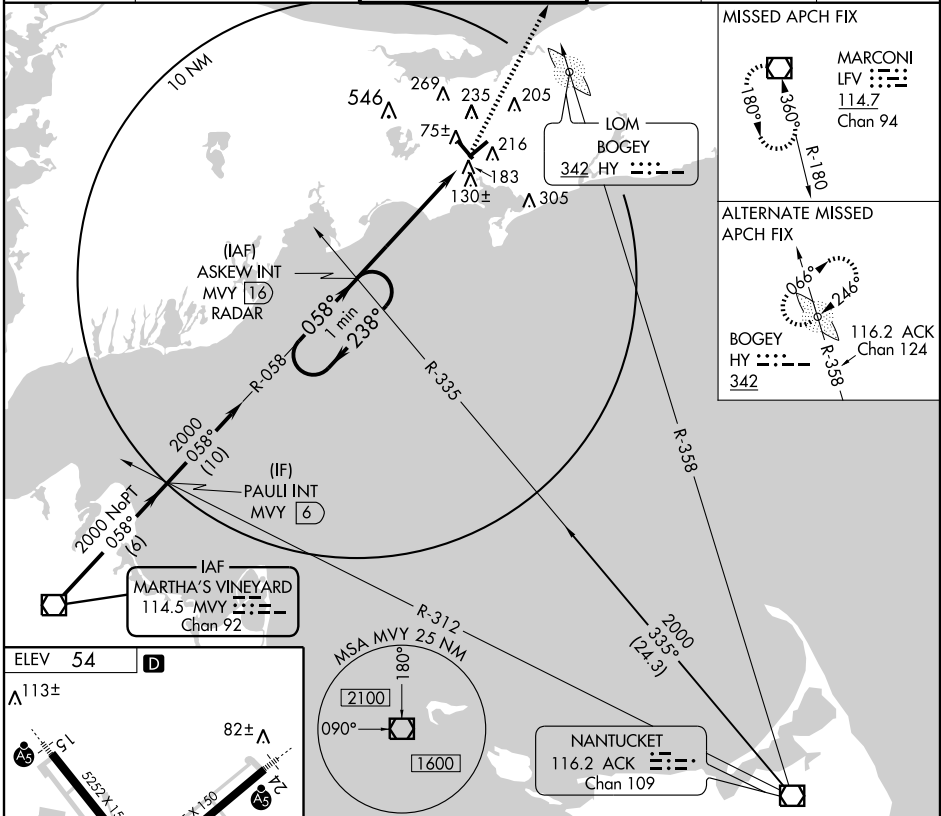
HYANNIS/  
BARNSTABLE MUNI-BOARDMAN/POLANDO FIELD (HY A)

# VOR RWY 6

- T** If local altimeter setting not received, use Chatham altimeter setting and increase all MDAs 40 feet.
- A** Visibility reduction by helicopters NA.

MISSED APPROACH: Climb to 2000 direct LFV VOR/DME and hold. When authorized by ATC, climb-in-hold to 3000.

ATIS	CAPE APP CON ★	HYANNIS TOWER ★	GND CON	CLNC DEL	UNICOM
<b>123.8</b>	<b>118.2 284.6</b>	<b>119.5 (CTAF) 0 257.8</b>	<b>121.9</b>	<b>125.15</b>	<b>122.95</b>

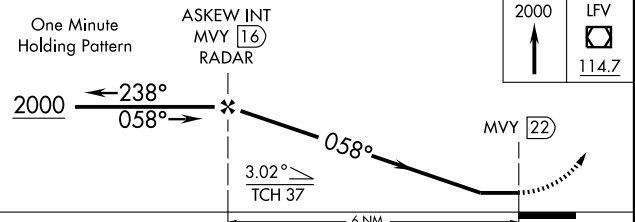
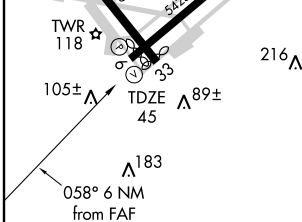
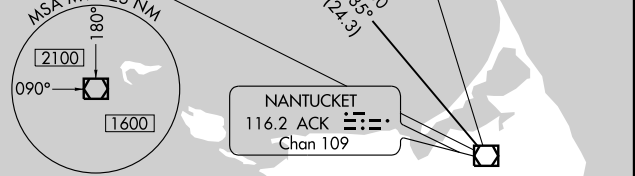
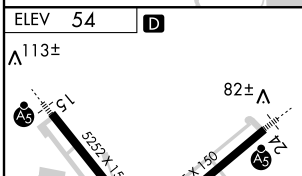


**MISSED APCH FIX**

MARCONI LFV **114.7** Chan 94

**ALTERNATE MISSED APCH FIX**

BOGEY HY **116.2 ACK** Chan 124



REIL Rwy 6  
HIRL Rwys 6-24 and 15-33  
FAF to MAP 6 NM

Knots	60	90	120	150	180
Min:Sec	5:59	3:59	2:59	2:24	2:00

CATEGORY	A	B	C	D
S-6	900-1 855 (900-1)	900-1¼ 855 (900-1¼)	900-2½ 855 (900-2½)	900-2¾ 855 (900-2¾)
CIRCLING	900-1 846 (900-1)	900-1¼ 846 (900-1¼)	900-2½ 846 (900-2½)	900-2¾ 846 (900-2¾)

HYANNIS, MASSACHUSETTS  
Amdt 9A 09239

HYANNIS/BARNSTABLE MUNI-BOARDMAN/POLANDO FIELD (HY A)  
41°40'N - 70°17'W

# VOR RWY 6

NE-1, 22 OCT 2009 to 19 NOV 2009

NE-1, 22 OCT 2009 to 19 NOV 2009