

RNAV (GPS) RWY 24

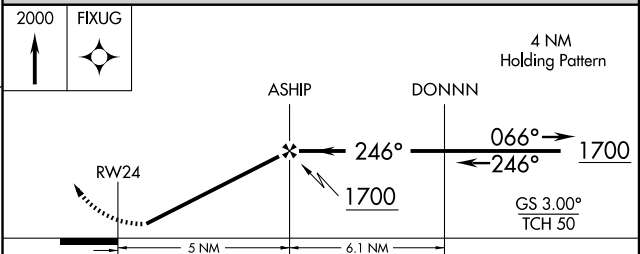
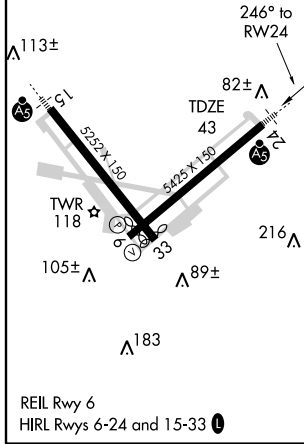
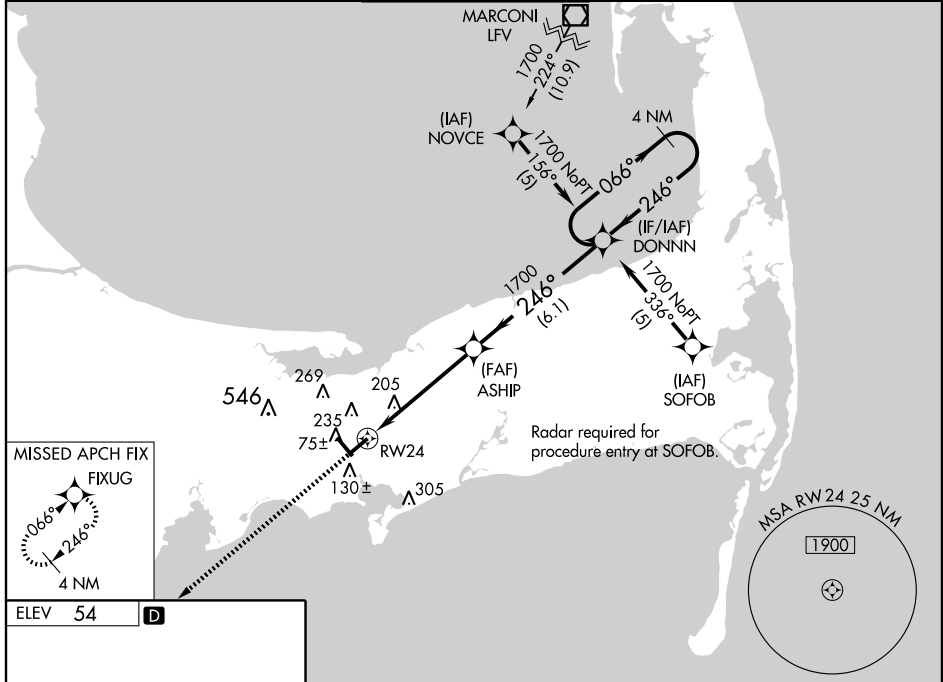
HYANNIS/BARNSTABLE MUNI-BOARDMAN/POLANDO FIELD (HYA)

WAAS CH 77812 W24A	APP CRS 246°	Rwy Idg 5425 TDZE 43 Apt Elev 54
--	------------------------	---

⚠ For uncompensated Baro-VNAV systems, LNAV/VNAV NA below -1.5°C (5°F) or above 48°C (118°F). DME/DME RNP -0.3 NA. Visibility reduction by helicopters NA.
⚠ When local altimeter setting not received, use Chatham altimeter setting and increase all DA 33 feet and all MDA 40 feet. Baro-VNAV NA when using Chatham Muni altimeter setting. For inoperative MALS, increase LNAV Cat C visibility to RVR 6000. Inoperative table does not apply to LPV all Cats, and LNAV Cats A and B.

MALS MISSED APPROACH:
 Climb to 2000 direct FIXUG and hold.

ATIS 123.8	CAPE APP CON ★ 118.2 284.6	HYANNIS TOWER ★ 119.5 (CTAF) 257.8	GND CON 121.9	CLNC DEL 125.15	UNICOM 122.95
----------------------	--------------------------------------	--	-------------------------	---------------------------	-------------------------



CATEGORY	A	B	C	D
LPV DA		318/50	275 (300-1)	
LNAV/VNAV DA		441/50	398 (400-1)	
LNAV MDA		500/50	457 (500-1)	
CIRCLING	560-1	506 (600-1)	580-1½ 526 (600-1½)	620-2 566 (600-2)

RNAV (GPS) RWY 24

NE-1, 22 OCT 2009 to 19 NOV 2009

NE-1, 22 OCT 2009 to 19 NOV 2009