

WAAS CH <b>61112</b> <b>W15A</b>	APP CRS <b>156°</b>	Rwy Idg TDZE <b>54</b> Apt Elev <b>54</b>	<b>5252</b>
--	------------------------	---	-------------

HYANNIS/  
BARNSTABLE MUNI-BBOARDMAN/POLANDO FIELD (HYA)

# RNAV (GPS) RWY 15

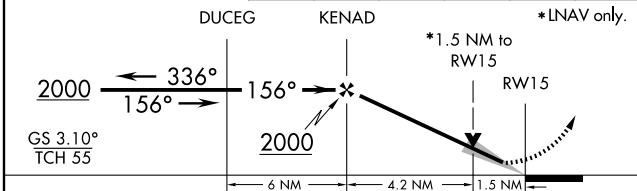
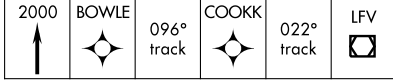
<p><b>▼</b> For uncompensated Baro-VNAV systems, LNAV/VNAV NA below -15°C (5°F) or above 39°C (102°F). DME/DME RNP -0.3. When local altimeter setting not received, use Chatham altimeter setting and increase all DA 33 feet and all MDA 40 feet. Baro-VNAV and VDP NA when using Chatham altimeter setting.</p>	<p><b>MALS R</b> <b>A5</b></p>	<p><b>MISSED APPROACH:</b> Climb to 2000 direct BOWLE and via 096° track to COOK and via 022° track to LFV VOR/DME and hold.</p>
---	------------------------------------	--

ATIS <b>123.8</b>	CAPE APP CON ★ <b>118.2 284.6</b>	HYANNIS TOWER ★ <b>119.5 (CTAF) 0 257.8</b>	GND CON <b>121.9</b>	CLNC DEL <b>125.15</b>	UNICOM <b>122.95</b>
----------------------	--------------------------------------	--	-------------------------	---------------------------	-------------------------

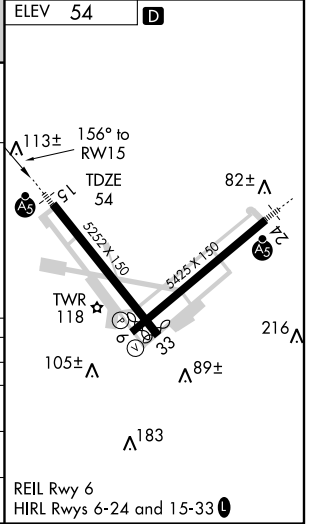


NE-1, 22 OCT 2009 to 19 NOV 2009

NE-1, 22 OCT 2009 to 19 NOV 2009



CATEGORY	A	B	C	D
LPV DA		254/24	200 (200-1/2)	
LNAV/VNAV DA		569/60	515 (600-1/4)	
LNAV MDA	600/24	546 (600-1/2)	600/50 546 (600-1)	600/60 546 (600-1/4)
CIRCLING	600-1	546 (600-1)	600-1 1/2 546 (600-1/2)	620-2 566 (600-2)



# RNAV (GPS) RWY 15