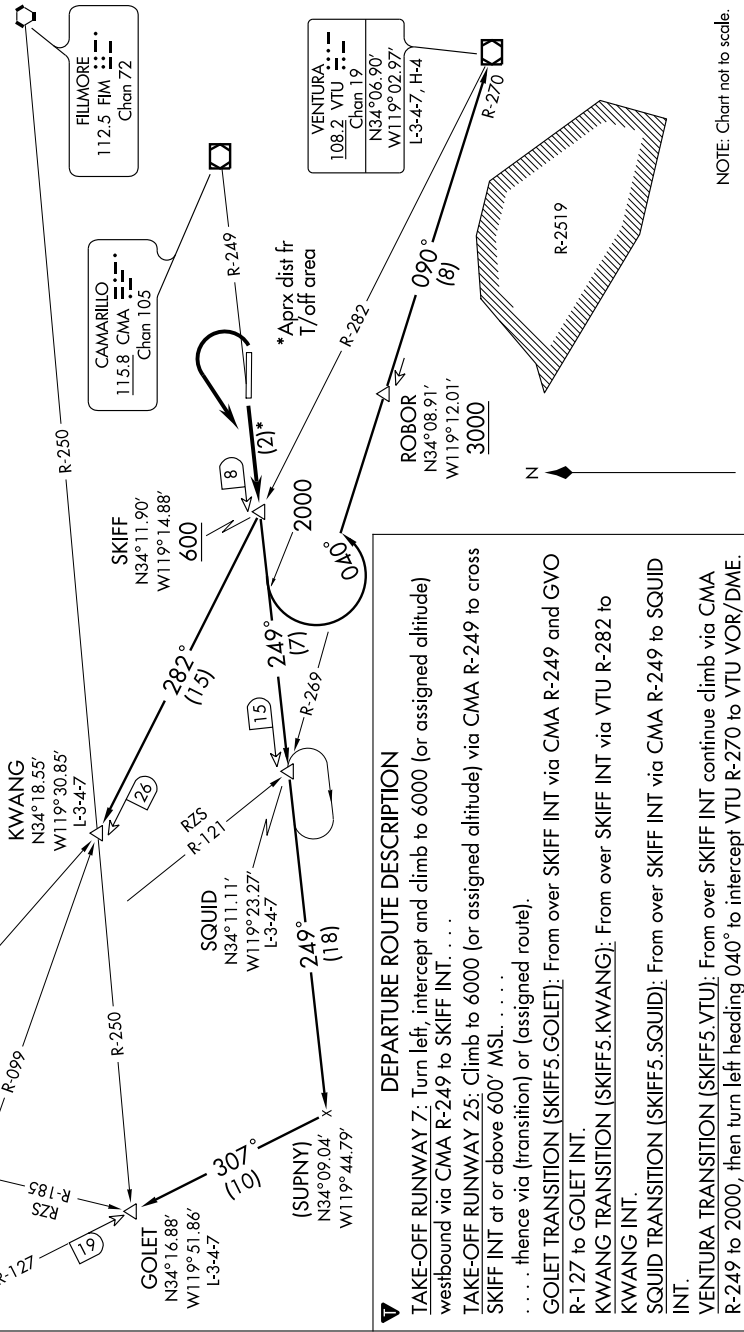


6002 NOV 19 19 OCT 2009 22:00Z SW-3

NOTE: Runway 7 take-off minimums, 2100-5 or standard with a minimum climb of 290' per NM to 2600'.
 NOTE: 59' AGL tree 527' from departure end of runway 7, 501' left of centerline.
 NOTE: Runway 25 take-off minimums, Standard except KWANG. Transition requires a minimum climb of 370' per NM to 600'.

ATIS 118.05
 GND CON 121.9
 OXNARD TOWER*
 134.95 (CTAF) 257.8
 POINT MUGU DEP CON*
 124.7 335.5
 LOS ANGELES CENTER
 119.05 135.5



DEPARTURE ROUTE DESCRIPTION

TAKE-OFF RUNWAY 7: Turn left, intercept and climb to 6000 (or assigned altitude) westbound via CMA R-249 to SKIFF INT. . . .

TAKE-OFF RUNWAY 25: Climb to 6000 (or assigned altitude) via CMA R-249 to cross SKIFF INT at or above 600' MSL. . . .
 thence via (transition) or (assigned route).

GOLET TRANSITION (SKIFF5.GOLET): From over SKIFF INT via CMA R-249 and GVO R-127 to GOLET INT.

KWANG TRANSITION (SKIFF5.KWANG): From over SKIFF INT via VTU R-282 to KWANG INT.

SQUID TRANSITION (SKIFF5.SQUID): From over SKIFF INT via CMA R-249 to SQUID INT.

VENTURA TRANSITION (SKIFF5.VTU): From over SKIFF INT continue climb via CMA R-249 to 2000, then turn left heading 040° to intercept VTU R-270 to VTU VOR/DME.

SW-3, 22 OCT 2009 to 19 NOV 2009