

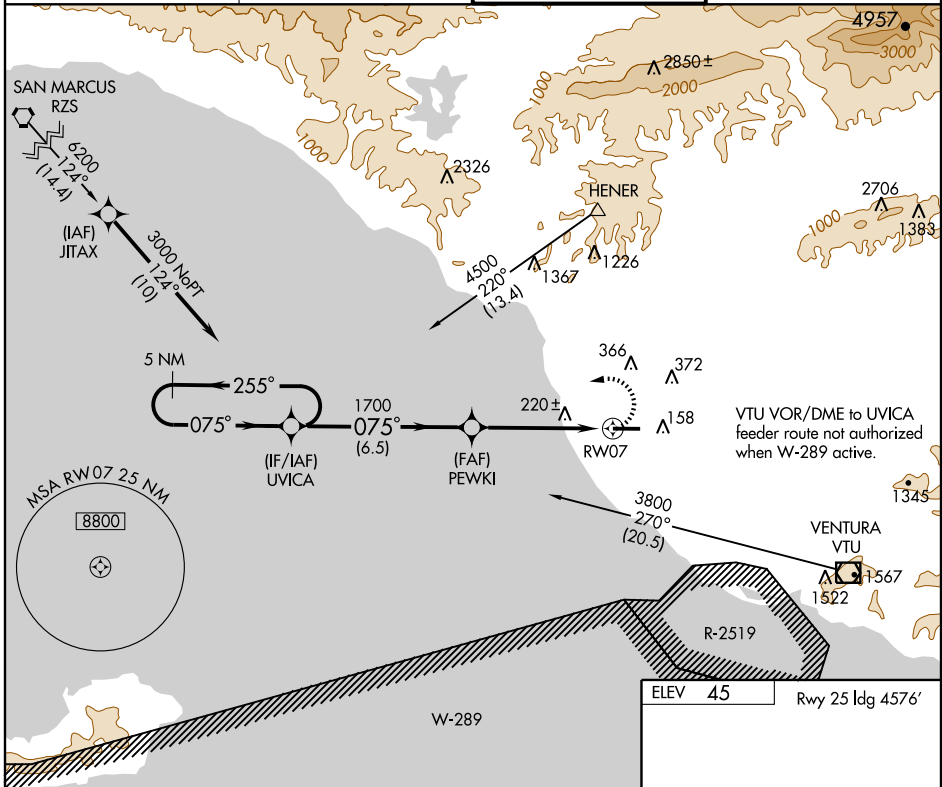
RNAV (GPS) RWY 7

OXNARD (OXR)

APP CRS 075°	Rwy Idg 5953
	TDZE 37
	Apt Elev 45

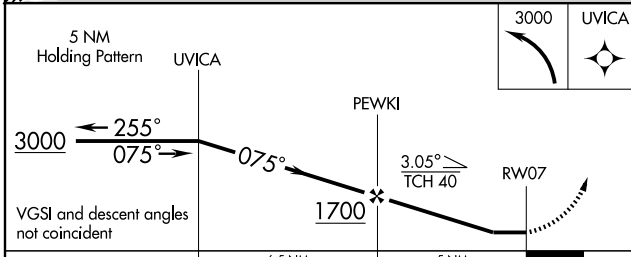
DME/DME RNP -0.3 NA.		MISSED APPROACH: Climbing left turn to 3000 direct UVICA and hold.	
----------------------	--	--	--

ATIS 118.05	POINT MUGU APP CON* 124.7 335.5	OXNARD TOWER* 134.95 (CTAF) 0 257.8	GND CON 121.9
-----------------------	---	---	-------------------------



SW-3, 22 OCT 2009 to 19 NOV 2009

SW-3, 22 OCT 2009 to 19 NOV 2009



ELEV	45	Rwy 25 Idg	4576'
------	----	------------	-------

075° to RWY07

5953 X 100

TDZE 37

117 98 112

MIRL Rwy 7-25

CATEGORY	A	B	C	D
LNNAV MDA	480-1	443 (500-1)	480-1¼ 443 (500-1¼)	560-1¼ 523 (600-1¼)
CIRCLING	500-1	455 (500-1)	500-1½ 455 (500-1½)	700-2 655 (700-2)