

RNAV (GPS) RWY 25

OXNARD (OXR)

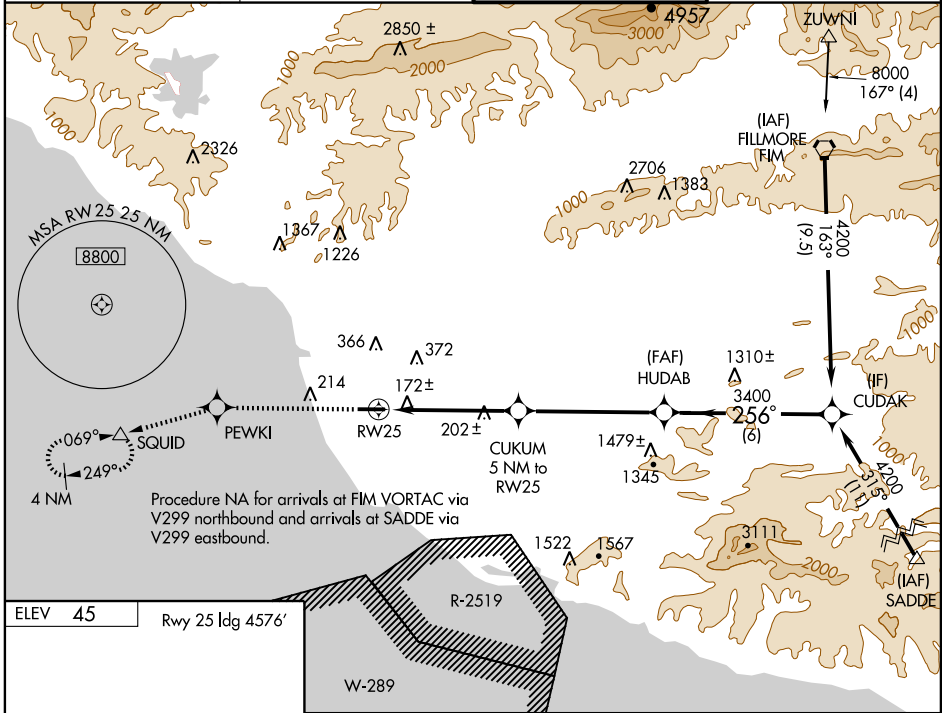
WAAS CH 86299 W25A	APP CRS 256°	Rwy ldg 4576 TDZE 41 Apt Elev 45
--	------------------------	---

Inoperative table does not apply. DME/DME RNP -0.3 NA.
 Visibility reductions by helicopters NA. For uncompensated Baro-VNAV systems, LNAV/VNAV NA below -15°C (5°F) or above 49°C (121°F).
 If local altimeter setting not received, use Camarillo altimeter setting and increase LPV DA/MDAs 20 feet, and LNAV/VNAV DA 55 feet.
 Baro-VNAV NA when using Camarillo altimeter setting.



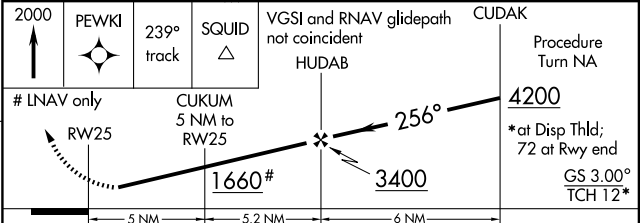
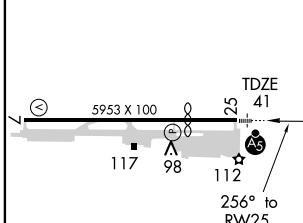
MISSED APPROACH: Climb to 2000 direct PEWKI and via 239° track to SQUID and hold.

ATIS 118.05	POINT MUGU APP CON* 124.7 335.5	OXNARD TOWER* 134.95 (CTAF) 0 257.8	GND CON 121.9
-----------------------	---	---	-------------------------



SW-3, 22 OCT 2009 to 19 NOV 2009

SW-3, 22 OCT 2009 to 19 NOV 2009



CATEGORY	A	B	C	D
LPV DA	412-1½ 371 (400-1½)			
LNAV/VNAV DA	452-1½ 411 (500-1½)			
LNAV MDA	460-1	419 (500-1)	460-1¼	419 (500-1¼)
CIRCLING	500-1	455 (500-1)	500-1½ 455 (500-1½)	700-2 655 (700-2)