

LOC RWY 25

OXNARD (OXR)

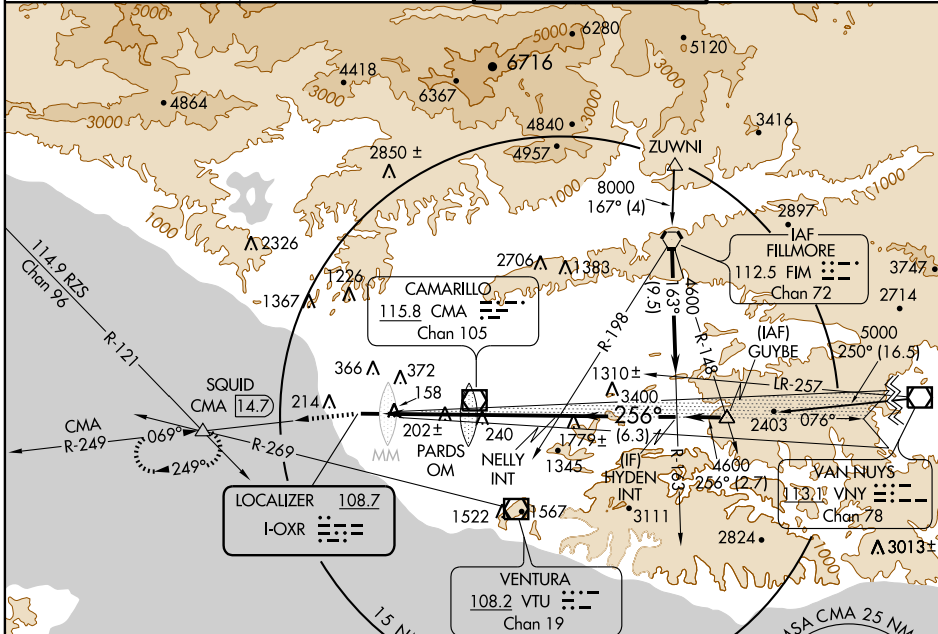
LOC I-OCR 108.7	APP CRS 256°	Rwy ldg TDZE Apt Elev	4576 41 45
---------------------------	------------------------	-----------------------------	---------------------------------------

⚠ Inoperative table does not apply.
⚠ Visibility reduction by helicopters NA.
 If local altimeter setting not received, use Camarillo altimeter setting and increase all MDAs 20 feet.



MISSED APPROACH: Climb to 2000 via CMA VOR/DME R-249 to SQUID INT/CMA 14.7 DME and hold.

ATIS 118.05	POINT MUGU APP CON ★ 124.7 335.5	OXNARD TOWER ★ 134.95 (CTAF) 257.8	GND CON 121.9
-----------------------	--	--	-------------------------

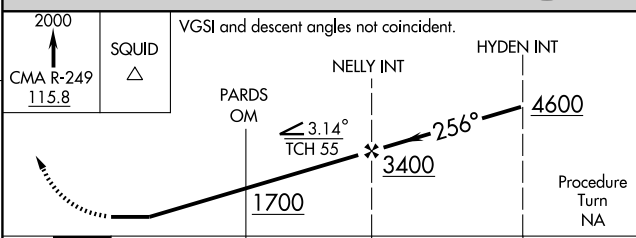
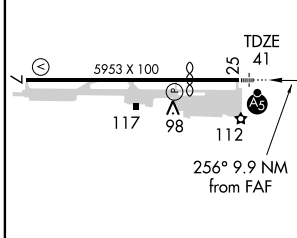
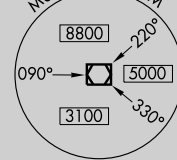


SW-3, 22 OCT 2009 to 19 NOV 2009

SW-3, 22 OCT 2009 to 19 NOV 2009

ELEV 45	Rwy 25 ldg 4576'
---------	------------------

Procedure NA for arrival at FIM VORTAC airway radials 148 CW 195.



MIRL Rwy 7-25	FAF to MAP 9.9 NM	Knots				Min:Sec					
		60	90	120	150	180	9:54	6:36	4:57	3:58	3:18
CATEGORY		A		B		C		D			
S-LOC 25		460-1 419 (500-1)		460-1¼ 419 (500-1¼)							
CIRCLING		500-1 455 (500-1)		500-1½ 455 (500-1½)		700-2 655 (700-2)					