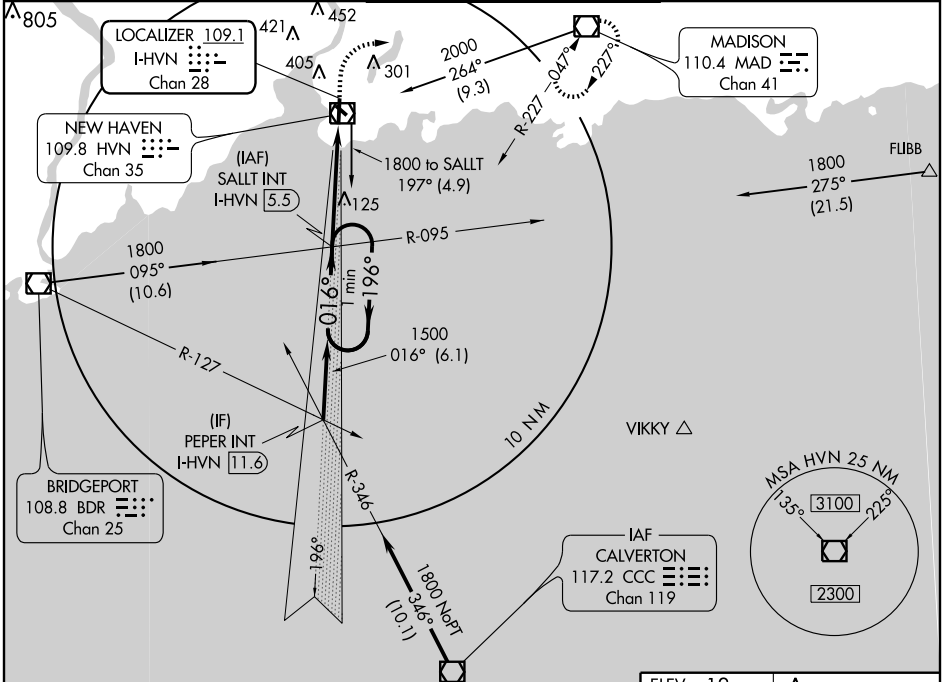


ILS or LOC RWY 2

NEW HAVEN / TWEED-NEW HAVEN (HVN)

| | | |
|--|------------------------|--|
| LOC/DME I-HVN 109.1 Chan 28 | APP CRS 016° | Rwy Idg 5600 TDZE 6 Apt Elev 12 |
|--|------------------------|--|

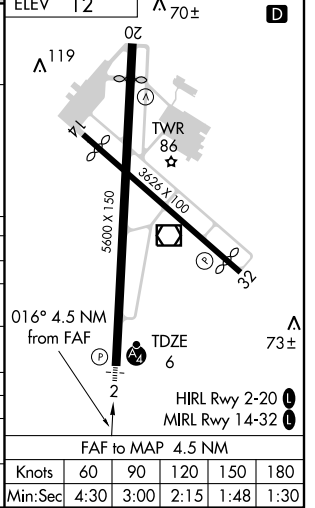
| | | | | |
|--|---|--|-------------------------|-------------------------|
| ⚠ When local altimeter setting not received, use Islip altimeter setting. Inoperative table does not apply. | MALSF | MISSED APPROACH: Climb to 600 then climbing right turn to 2000 direct MAD VOR/DME and hold. | | |
| ATIS 133.65 | NEW YORK APP CON 124.075 343.65 | TWEED-NEW HAVEN TOWER * 124.8 (CTAF) 0 | GND CON 121.7 | UNICOM 122.95 |



NE-1, 22 OCT 2009 to 19 NOV 2009

NE-1, 22 OCT 2009 to 19 NOV 2009

| One Minute Holding Pattern | SALT INT I-HVN 5.5 | 600 | 2000 | MAD |
|----------------------------------|--------------------|--------------|--------------------------|--------------------------|
| 1500 ← 196° | 1500 | 1500 | 016° → | 1500 |
| GS 3.00° | TCH 50 | 4.5 NM | I-HVN 1.1 | |
| CATEGORY | A | B | C | D |
| S-ILS 2 | | 297/50 | 291 (300-1) | |
| S-LOC 2 | 400/50 | 394 (400-1) | | 400/60 394 (400-1¼) |
| CIRCLING | 720 - 1 | 708 (800-1) | 720 - 2 708 (800-2) | 720 - 2¼ 708 (800-2¼) |
| ISLIP ALTIMETER SETTING MINIMUMS | | | | |
| S-ILS 2 | | 378/60 | 372 (400-1¼) | |
| S-LOC 2 | 480/50 | 474 (500-1) | 480/60 474 (500-1¼) | 480-1½ 474 (500-1½) |
| CIRCLING | 800 - 1¼ | 788 (800-1¼) | 800 - 2¼ 788 (800-2¼) | 800 - 2½ 788 (800-2½) |



| | | | | | | |
|-------------------|---------|------|------|------|------|------|
| FAF to MAP 4.5 NM | Knots | 60 | 90 | 120 | 150 | 180 |
| | Min:Sec | 4:30 | 3:00 | 2:15 | 1:48 | 1:30 |