

RNAV (GPS) RWY 22

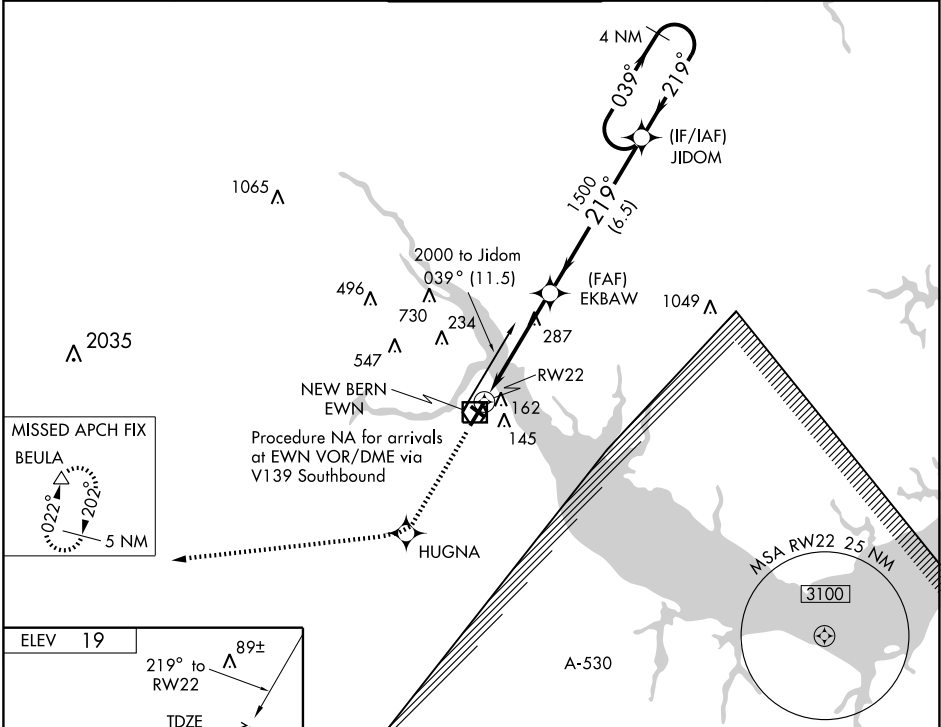
NEW BERN/COASTAL CAROLINA RGNL (E'WN)

| | | | |
|--|------------------------|-----------------------------|---------------------------------------|
| WAAS CH 63002 W22A | APP CRS 219° | Rwy Idg TDZE Apt Elev | 6004 17 19 |
|--|------------------------|-----------------------------|---------------------------------------|

⚠ If local altimeter setting not received, use Cherry Point altimeter setting and increase all DAs/MDAs 40 feet. Baro-VNAV and VDP NA when using Cherry Point altimeter setting.
ASR For uncompensated Baro-VNAV systems, LNAV/VNAV NA below -1.5°C (5°F) or above 48°C (119°F). DME/DME RNP-0.3 NA. Visibility reduction by helicopters NA.

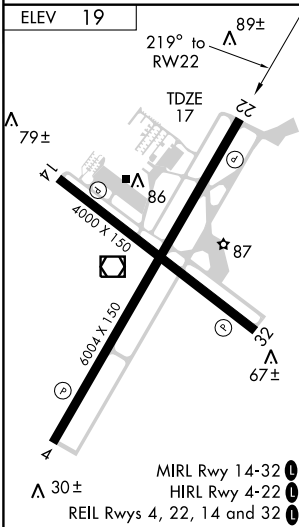
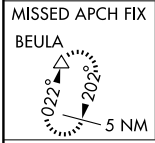
MISSED APPROACH:
Climb to 3000 direct HUGNA and via 271° track to BEULA and hold.

| | | | | |
|------------------------|---|--|--------------------------|-------------------------|
| ASOS 118.525 | CHERRY POINT APP CON 119.35 374.9 | NEW BERN TOWER* 124.25 (CTAF) 0 | CLNC DEL 121.7 | GND CON 121.7 |
|------------------------|---|--|--------------------------|-------------------------|



SE-2, 22 OCT 2009 to 19 NOV 2009

SE-2, 22 OCT 2009 to 19 NOV 2009



| | | | | |
|--------------|-------------------|----------------------|---|------------------------|
| 3000 HUGNA | TRK 271° | BEULA | VGSI and RNAV glidepath not coincident. | |
| EKBAB | JIDOM | 4 NM Holding Pattern | | |
| *LNAV only | *1.6 NM to RWY 22 | 2000 | GS 3.00° TCH 40 | |
| 1.6 NM | 2.9 NM | 6.5 NM | | |
| CATEGORY | A | B | C | D |
| LPV DA | | 286-1 | 269 (300-1) | |
| LNAV/VNAV DA | | 563-2 | 546 (600-2) | |
| LNAV MDA | 540-1 | 523 (600-1) | 540-1½ 523 (600-1½) | 540-1¾ 523 (600-1¾) |
| CIRCLING | 540-1 | 521 (600-1) | 540-1½ 521 (600-1½) | 580-2 561 (600-2) |