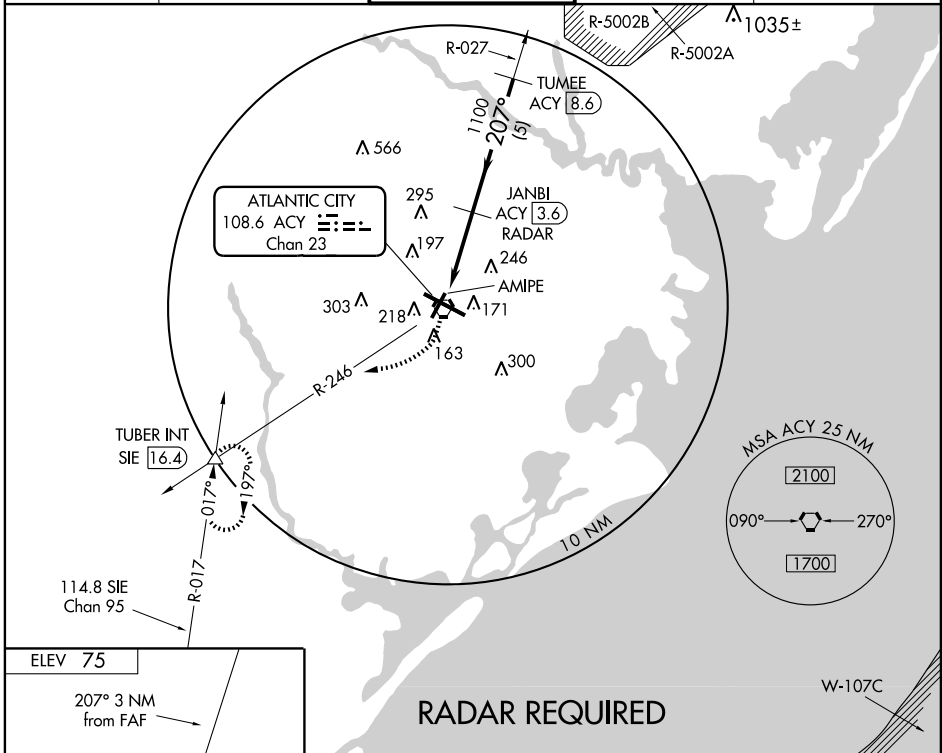


VORTAC ACY <b>108.6</b> Chan <b>23</b>	APP CRS <b>207°</b>	Rwy ldg <b>6144</b> TDZE <b>68</b> Apt Elev <b>75</b>
--	------------------------	---

# VOR/DME RWY 22

ATLANTIC CITY INTL (ACY)

ASR	MISSED APPROACH: Climb to 500, then climbing right turn to 2000 via ACY R-246 to TUBER INT/SIE 16.40 DME and hold.			
ATIS <b>108.6 316.15</b>	ATLANTIC CITY APP CON <b>124.6 327.125</b>	ATLANTIC CITY TOWER <b>120.3 239.0</b>	GND CON <b>121.9 284.6</b>	CLNC DEL <b>127.85 353.775</b>



NE-2, 22 OCT 2009 to 19 NOV 2009

NE-2, 22 OCT 2009 to 19 NOV 2009

