

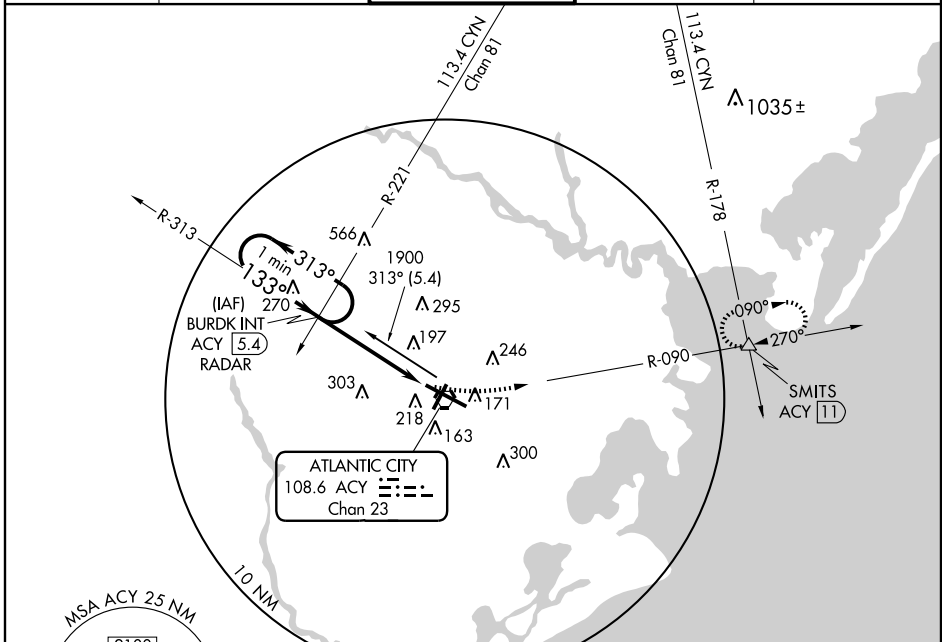
# VOR RWY 13

ATLANTIC CITY INTL (ACY)

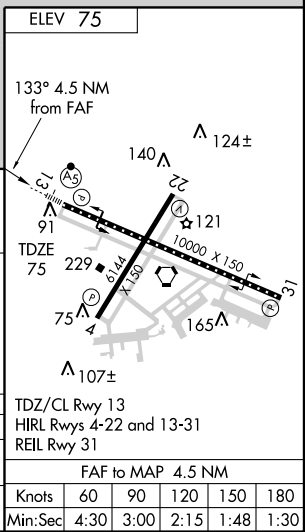
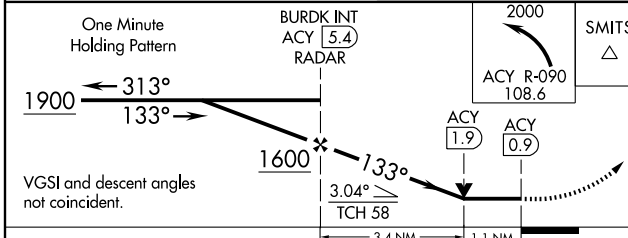
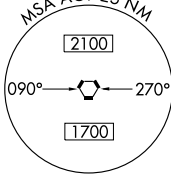
VORTAC ACY	APP CRS	Rwy ldg	<b>10000</b>
<b>108.6</b>	<b>133°</b>	TDZE	<b>75</b>
Chan <b>23</b>		Apt Elev	<b>75</b>

<p>For inoperative MALS, increase S-13 Cat D visibility to RVR 6000 and Cat E to 1½.</p>		<p>MISSED APPROACH: Climbing left turn to 2000 via ACY R-090 to SMITS INT/11 DME and hold.</p>

ATIS	ATLANTIC CITY APP CON	ATLANTIC CITY TOWER	GND CON	CLNC DEL
<b>108.6 316.15</b>	<b>124.6 327.125</b>	<b>120.3 239.0</b>	<b>121.9 284.6</b>	<b>127.85 353.775</b>



NE-2, 22 OCT 2009 to 19 NOV 2009



CATEGORY	A	B	C	D	E
S-13	480/24	405 (500-½)	480/40 405 (500-¾)	480/50	405 (500-1)
CIRCLING	540-1	465 (500-1)	540-1½ 465 (500-1½)	640-2 565 (600-2)	760-2½ 685 (700-2½)

FAF to MAP 4.5 NM					
Knots	60	90	120	150	180
Min:Sec	4:30	3:00	2:15	1:48	1:30