

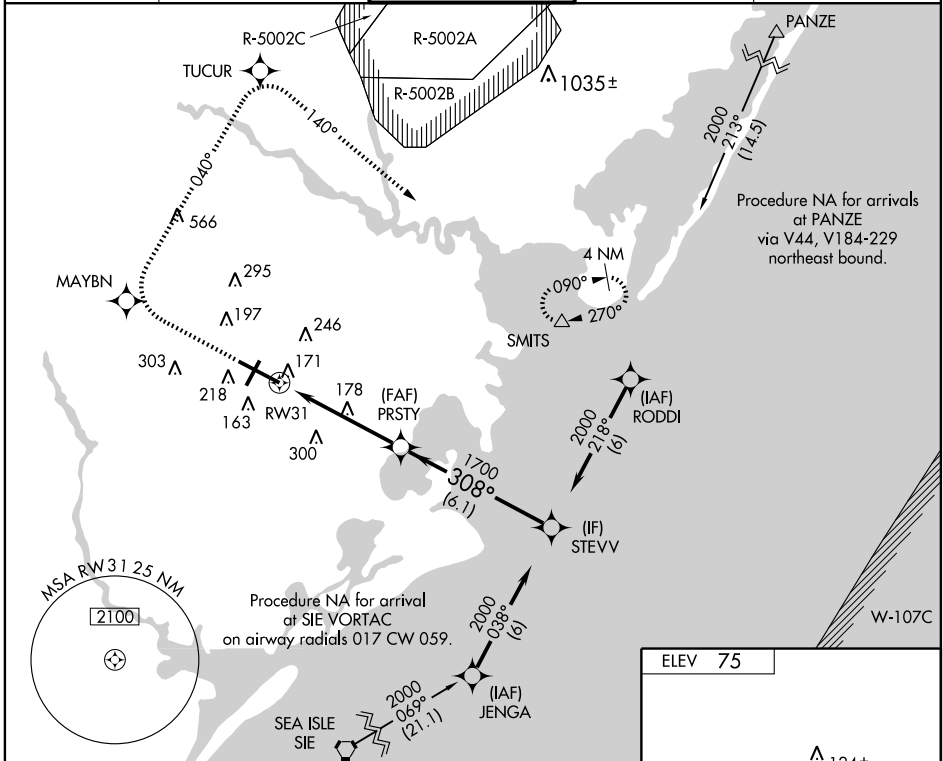
RNAV (GPS) RWY 31

ATLANTIC CITY INTL (ACY)

WAAS CH 50113 W31A	APP CRS 308°	Rwy Idg 10000 TDZE 63 Apt Elev 75
--	------------------------	--

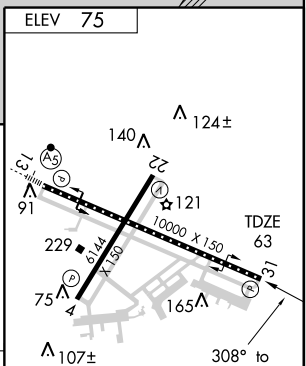
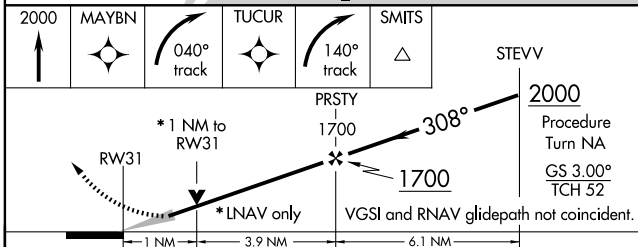
<p>ASR DME/DME RNP-0.3 NA. For uncompensated Baro-VNAV systems, LNAV/VNAV NA below -15°C (5°F) or above 48°C (118°F).</p>	<p>MISSED APPROACH: Climb to 2000 direct MAYBN and right turn via 040° track to TUCUR and right turn via 140° track to SMITS and hold.</p>
--	---

ATIS 108.6 316.15	ATLANTIC CITY APP CON 124.6 327.125	ATLANTIC CITY TOWER 120.3 239.0	GND CON 121.9 284.6	CLNC DEL 127.85 353.775
-----------------------------	---	---	-------------------------------	-----------------------------------



NE-2, 22 OCT 2009 to 19 NOV 2009

NE-2, 22 OCT 2009 to 19 NOV 2009



CATEGORY	A	B	C	D	E
LPV DA	339-1 276 (300-1)				
LNAV/VNAV DA	421-1¼ 358(400-1¼)				
LNAV MDA	440-1 377 (400-1)		440-1¼ 377 (400-1¼)		
CIRCLING	540-1 465 (500-1)	540-1½ 465 (500-1½)	640-2 565 (600-2)	760-2½ 685 (700-2½)	

ELEV 75
TDZ/CL Rwy 13
HIRL Rwy 4-22 and 13-31
REIL Rwy 31