

WAAS CH 40013 W22A	APP CRS 218°	Rwy Idg 6144 TDZE 68 Apt Elev 75
--	------------------------	---

RNAV (GPS) RWY 22

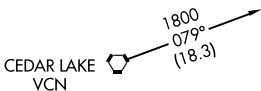
ATLANTIC CITY INTL (ACY)

DME/DME RNP-0.3 NA. Baro-VNAV NA below -15°C (5°F).	MISSED APPROACH: Climb to 2000 direct FASEN and via 273° track to TUBER and hold.
--	---

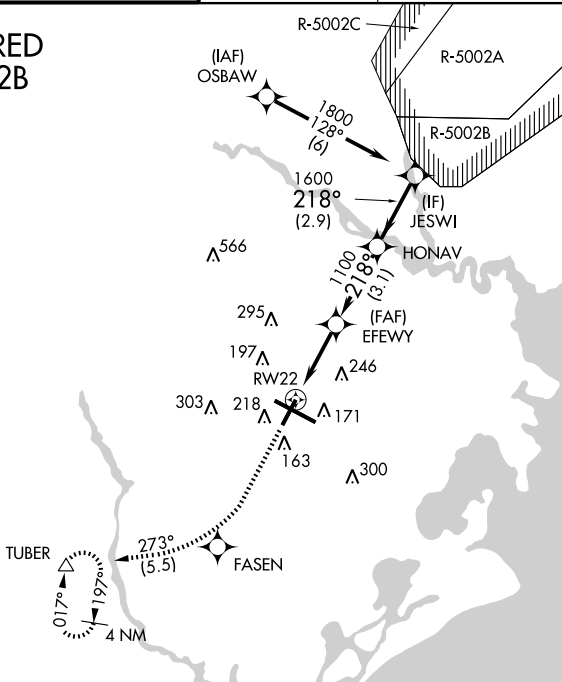
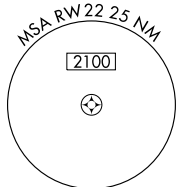
ATIS 108.6 316.15	ATLANTIC CITY APP CON 124.6 327.125	ATLANTIC CITY TOWER 120.3 239.0	GND CON 121.9 284.6	CLNC DEL 127.85 353.775
-----------------------------	---	---	-------------------------------	-----------------------------------

**RADAR REQUIRED
WHEN R-5002B
IS ACTIVE.**

△ 603

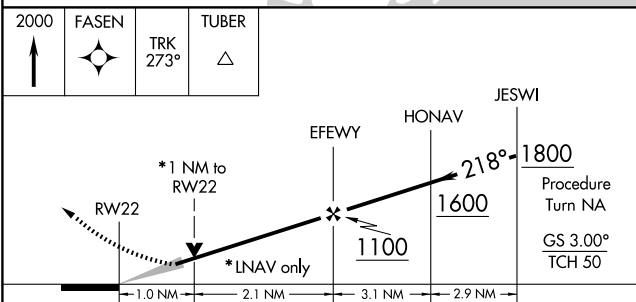
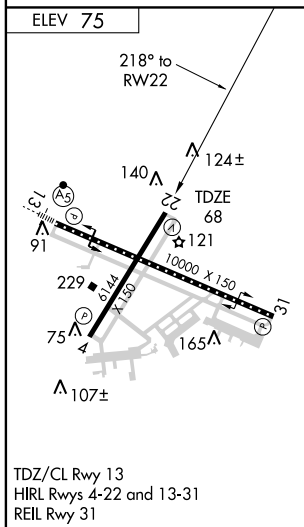


Procedure NA for arrival at VCN VORTAC on airway radials 066 CW 115.



NE-2, 22 OCT 2009 to 19 NOV 2009

NE-2, 22 OCT 2009 to 19 NOV 2009



CATEGORY	A	B	C	D	E
LPV DA	326-1 258 (300-1)				
LNAV/VNAV DA	390-1 322 (400-1)				390-1½ 322 (400-1½)
LNAV MDA	440-1 372 (400-1)			440-1½ 372 (400-1½)	
CIRCLING	540-1 465 (500-1)		540-1½ 465 (500-1½)	640-2 565 (600-2)	760-2½ 685 (700-2½)