

HI-VOR/DME or TACAN RWY 31

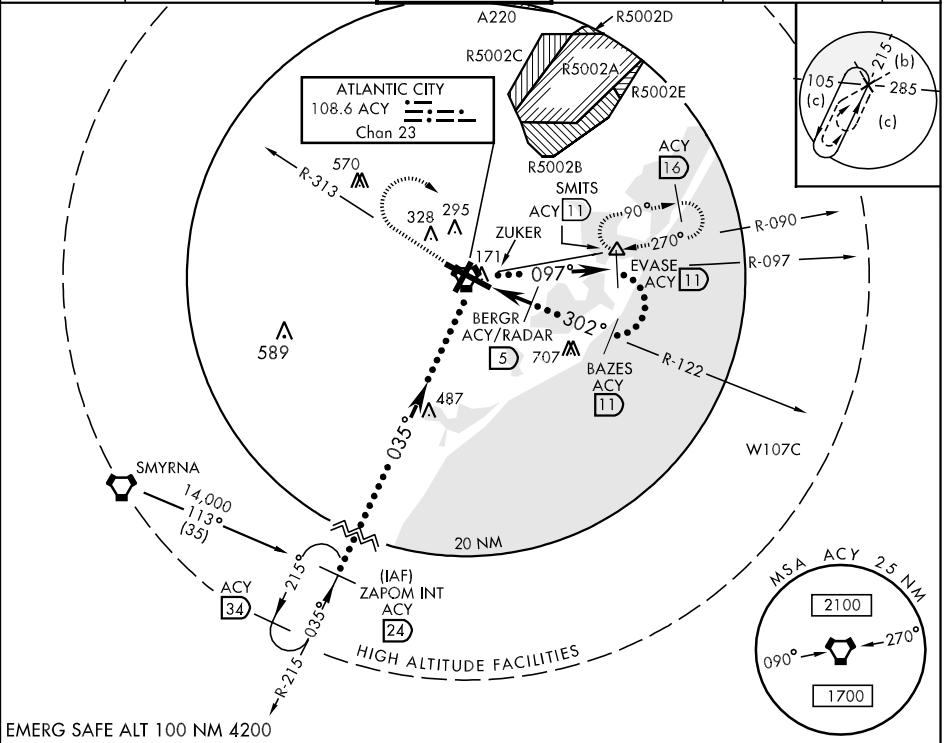
VORTAC ACY 108.6 Chan 23	APCH CRS 302°	Rwy Ldg TDZE 10,000 Arprt Elev 75
---------------------------------------	-------------------------	---

JAL-669 [USAF]

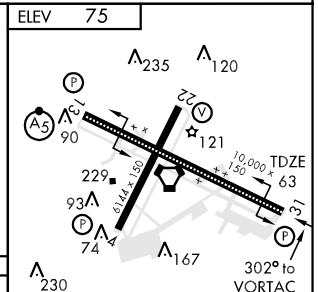
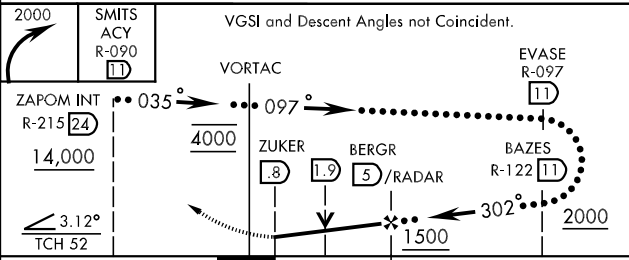
ATLANTIC CITY INTL (KACY)

MISSED APPROACH:
Climbing right turn to 2000 via heading 120° and ACY R-090 to SMITS INT/ACY 11 DME and hold.

ATIS 108.6	ATLANTIC CITY APP CON 130°- 309° 124.6 327.125 310°- 129° 134.25 385.5	ATLANTIC CITY TOWER 120.3 239.0	GND CON 121.9 284.6	CLNC DEL 127.85 353.775	ASR
----------------------	--	---	-------------------------------	-----------------------------------	-----



EMERG SAFE ALT 100 NM 4200



CATEGORY	C	D	E
S-31	480-1 1/4	417 (500-1 1/4)	480-1 1/2 (500-1 1/2)
CIRCLING	540-1 1/2 (500-1 1/2)	640-2 (600-2)	760-2 1/2 (700-2 1/2)
S-ASR 31	480-1 1/4	417 (500-1 1/4)	480-1 1/2 (500-1 1/2)

REIL Rwy 31
HIRL Rwy 4-22 and 13-31
TDZL/CL Rwy 13

HI-VOR/DME or TACAN RWY 31

NE-2, 22 OCT 2009 to 19 NOV 2009

NE-2, 22 OCT 2009 to 19 NOV 2009