

MONTRÖSE, COLORADO

AL-668 (FAA)

# RNAV (GPS) RWY 13

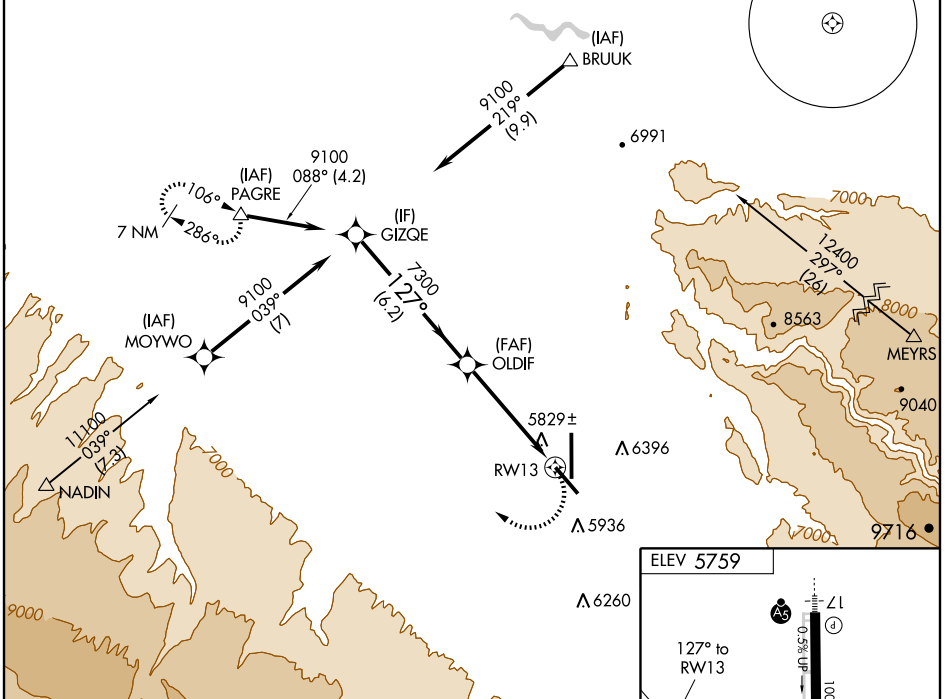
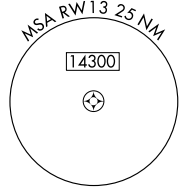
MONTRÖSE RGNL (MTJ)

APP CRS <b>127°</b>	Rwy Idg <b>7500</b>
	TDZE <b>5719</b>
	Apt Elev <b>5759</b>

<p><b>∇</b> DME/DME RNP-0.3 NA.</p> <p><b>▲</b> Visibility reduction by helicopters NA.</p>	<p>MISSED APPROACH: Climbing right turn to 11000 direct PAGRE and hold, continue climb-in-hold to 11000.</p>
---	--

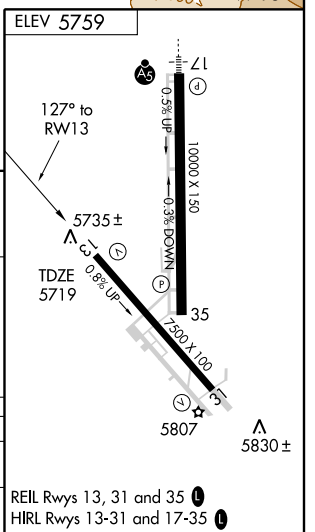
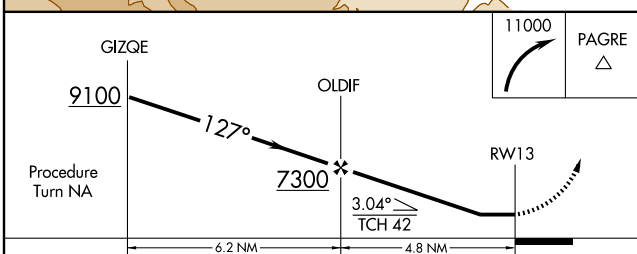
<p>ASOS <b>135.225</b></p>	<p>DENVER CENTER <b>125.35 354.05</b></p>	<p>UNICOM <b>122.8 (CTAF)</b></p>
--------------------------------	---	---------------------------------------

Procedure NA for arrivals at NADIN via V244 westbound, arrivals at MEYRS via V26-244 eastbound and arrivals at PAGRE via V26 northwest bound.



SW-1, 22 OCT 2009 to 19 NOV 2009

SW-1, 22 OCT 2009 to 19 NOV 2009



CATEGORY	A	B	C	D
LNVA MDA	6160-1	441 (500-1)	6160-1¼ 441 (500-1¼)	6160-1½ 441 (500-1½)
CIRCLING	6240-1 481 (500-1)	6300-1 541 (600-1)	6660-2¾ 901 (1000-2¾)	6700-3 941 (1000-3)

MONTRÖSE, COLORADO  
Orig 09127

38°31'N-107°54'W

# RNAV (GPS) RWY 13